

# building **vibrant** communities

annual report 2022



Vibrant communities where **people** have equitable and inclusive opportunities to prosper, participate, and be inspired to give.

A MESSAGE TO OUR NEIGHBORS	3
GIFT PLANNING	4
EFFECTIVE GRANTMAKING	10
COMMUNITY LEADERSHIP	20
STRATEGIC PLAN	22
STEWARDSHIP OF ASSETS	26
OFFICERS, DIRECTORS AND STAFF	42
FINANCIAL STATEMENTS	43

## 2022 highlights



**\$51.3**

million in total assets



**\$1.5**

million in contributions received



**\$2.3**

million awarded in grants and scholarships to your community



**279**

funds established since 1995



**200+**

volunteers supporting Main Street Community Foundation

# A Message to Our Neighbors

**Building Vibrant Communities** – is the driving vision for Main Street Community Foundation (MSCF) and is embedded in our new strategic plan. 2022 provided the opportunity to create strategic priorities to guide our work for the future that will sustain vibrant communities where people have equitable and inclusive opportunities to prosper, participate and be inspired to give in each of the communities we serve. We invite you to read more about that plan on page 22 of this annual report.

MSCF is forever grateful to the many donors who have entrusted their legacies to us. We are proud to steward over 250 named funds and just over \$51 million in assets as of 12/31/22. Since its establishment in 1995, MSCF has awarded \$25.8 million in grants and scholarships to support residents and nonprofits in the Connecticut communities of Bristol, Burlington, Plainville, Plymouth, Southington, and Wolcott.

Our continuous adherence to sound financial practices led to an unmodified audit opinion of our 2022 financials from the accounting firm CliftonLarsonAllen LLP. We are confirmed in compliance with the National Standards for U.S. Community Foundations, a distinction we have held for over eighteen years.

Dependent on volunteer leadership to fulfill our mission, those who serve on our board of directors and committees expand our

community philanthropic efforts by sharing their individual and collective knowledge and expertise. In early 2023, we bid farewell to highly respected board members Mary Ellen Hobson and Kimberly James. To all of our volunteers, we are very grateful for their generous donation of time, talents and community insight.

On behalf of the Founders, Board of Directors and staff of MSCF, we thank you for your partnership. This annual report is our opportunity to share with you the stories of our donors and their investments in your community. It is also an opportunity to recognize the collective philanthropy of all and to invite you to join with us, so together we can create lasting impact- forever.

Sincerely,

Susan D. Sadecki, *President & CEO*  
Scott F. Fournier, *Chair of the Board*



## Dedication to the Bristol Community

We dedicate this Annual Report to the Bristol community for their unwavering compassion in the days that followed the loss of two beloved members of the Bristol Police Department killed in the line of duty on October 12, 2022. The tragic loss of heroes Lieutenant Dustin DeMonte and Sergeant Alex Hamzy as well as the valiant actions of injured Officer Alec Iurato, were felt by many throughout the city of Bristol and beyond. Residents united to drop off food to the first responders, turned on blue lights to honor the fallen, and created messages of sympathy that papered the police department windows and walls. These displays of respect, kindness, and generosity helped to heal a broken-hearted community that has emerged unified and stronger in support of each other. May we always remember the courage and sacrifices made by these heroes and continue to admire the bravery it takes to protect and serve our community.

# GIFT PLANNING

Endowed gifts and bequests have been the cornerstone of charitable contributions to the Main Street Community Foundation, helping to ensure that a permanent resource of assets will forever support the communities it serves. Each of the following funds established in 2022 and planned gifts reflect a donor's desire to leave a legacy and make a difference in their community.

There are many ways to give and benefit the communities of Bristol, Burlington, Plainville, Plymouth, Southington and Wolcott.



# Funds Established in 2022



## Bristol Lions Club/ James J. Keating Scholarship Fund

This scholarship fund was established by the Bristol Lions Club with a bequest previously received from the estate of Mark M. Keating. This scholarship honors the memory of Mr. Keating's father, James J. Keating. James was born in 1890 and passed away in Bristol, living to be 107 years old. After retiring, James became invested in eye health after his friend lost their eyesight, and he joined the Bristol Lions Club. As part of his work, he helped organize glaucoma and vision screening drives, as well as led efforts to set up vision screening machines in Bristol schools and institute mandatory vision testing of schoolchildren.

A scholarship will be awarded annually to a graduating senior going on to college from Bristol, Burlington, Plainville, Plymouth, Southington or Wolcott, with a preference for a student from Bristol, who is classified as legally blind or visually impaired.



## Bristol Route 6 Flag Fund

To honor all veterans, American flags are flown annually on Route 6 and other parts

of Bristol from Memorial Day through Veteran's Day. This tradition was started in 2002 by the late Bristol resident Bill Englert, and it has been continued by his son Joe Englert. Joe is a longtime Bristol resident and owner of City True Value Hardware, and giving back to the City of Bristol is a core part of his life and his family. Every year Joe and a group of caring residents put up the flags, maintain them, then take them down and store them; they ensure that every flag is of high quality and meets their standards to be displayed.

Joe Englert established this designated fund to accept donations to purchase the American flags and keep this annual tradition alive.



Myra, Michael and  
Ryland Desroches

## Myra Boccardi Desroches Advancing Young Minds Fund

This donor advised fund was established by the family of Myra Boccardi Desroches to honor her passion for children and literacy. Myra was a first-grade teacher for years at Linden Street School in Plainville before she was a literacy coach within Winchester Public Schools.

The focus of the Myra Boccardi Desroches Advancing Young Minds Fund is formed to support Myra's career-long passion for kids, literacy and helping our youth reach their full potential. Grants will be awarded to organizations to provide literacy and other services, and the resources needed in the mission of advancing young minds holistically.



Evan J. Chyun

## Evan J. Chyun Memorial Scholarship

This scholarship fund was established to honor the memory of Evan J. Chyun who passed away four days before his 40th birthday

on May 29, 2022 following a tragic automobile accident. Evan was a passionate advocate for social justice especially racial and gender equality. A champion for people often ignored or mistreated by the system, he worked as a public defender striving to make the world a better place for all. This scholarship is available to a graduating high school senior, graduate of Bristol Eastern High School or adult learners who graduated from Bristol Eastern High School and are returning to school; applicants must be pursuing undergraduate education at a two-year or four-year college or university.



Paul and Joanne D'Aprile

## Paul and Joanne D'Aprile Family Fund

Paul and Joanne D'Aprile are life-long residents of Bristol, Connecticut and are known for their giving hearts. Giving to local organizations is very important and includes

hometown favorites St. Matthew Church, where they have been life-long members; St. Matthew School, attended by all of their children; and the American Clock and Watch Museum, to which Paul has donated innumerable volunteer hours. They also support education through the Michael Paul D'Aprile Scholarship Fund at St. Matthew School. In addition to local nonprofits, they give to national charities such as Save the Children. Grants from this advised fund will continue that support.

Paul and Joanne are devoted to their family and community. To further their support beyond their lifetime, they have left a bequest to assure giving in perpetuity. They are unassuming. This donor advised fund will continue their legacy, which represents and encourages faith, family, and community service.



Jake Gilbert

## Jake Gilbert Memorial Culinary Arts Scholarship Fund

The Jake Gilbert Memorial Culinary Arts Scholarship Fund was established by the Robert Rosenheim

Foundation to honor the memory of Jake Gilbert. Jake studied Culinary Arts at Johnson & Wales University, and this scholarship not only honors his legacy but will help inspire other culinary students who have the same passion that Jake had for food.

Jake was diagnosed in 2019 with a rare, aggressive soft tissue sarcoma. He underwent surgeries, radiation, chemotherapy and clinical trial drugs. He fought hard for four years and was the bravest warrior to his family and friends. Cancer took him on October 21, 2022 at the young age of 24, but his memory will live on forever.

This scholarship will help others achieve their culinary passions and dreams while continuing Jake's legacy.

*continued*



**Sergeant Alex Hamzy**

### **Sergeant Alex Hamzy Memorial Fund**

Sergeant Alex Hamzy was an eight-year veteran of the Bristol Police Department

who was killed in the line of duty on October 12, 2022. At just 34 years old, Alex lived a life of accomplishments that was more like a person who was decades older. He always wanted to be a police officer and served his hometown of Bristol with dedication, conviction and integrity. He was a longtime advisor for the Bristol Police Explorer Cadet Program and passionate about teaching young adults the values needed to succeed in serving their community. He was a member of the Central Regional Emergency Response Team and joining that team was one of the many highlights of his career.

This donor advised fund was established by the family of Sergeant Alex Hamzy to honor his memory and selfless service to his community. Grants from this fund will be awarded to organizations at the recommendation of Alex's family.



**Charlotte Kall**

### **Charlotte Kall Fund for Bristol Adult Resource Center**

Gayle Kall established this designated fund in 2022 in honor of her sister Charlotte Kall. This fund will

provide support to Bristol Adult Resource Center, Inc. (BARC) of Bristol, CT, an organization that provides services for individuals with intellectual and developmental disabilities. Grants will be distributed to BARC in support of the organization's residential services with preference for social and recreational programs including music enrichment activities.

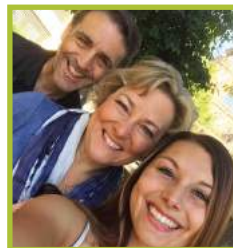


**Julie Larese**

### **Julie Larese Bristol Tramps Scholarship Fund**

The Bristol Tramps Sports Reunion is an organization that recognizes local athletes, coaches, teams, and supporters

of athletics in Bristol. It all started in 1970 with Julie Larese whose love for Bristol and sports established this organization. Julie was a philanthropist, humanitarian, and friend who gave his all to those around him and to the City of Bristol. Scholarships in Julie's name have been awarded to graduating high school seniors for years, and the fund was transferred to MSCF. Scholarship awards will continue to support graduating seniors from high schools located in Bristol who display all of the character traits of a good citizen, are involved in school activities of any kind, demonstrate solid academic performance, and are successful athletes.



**Ron, Susan and Jenna Sadecki**

### **Sadecki/Ciechoski Family Charitable Fund**

Susan and Ronald Sadecki established this fund to honor their families and recognize Susan's long-time commitment to the community foundation field. Grants from this fund will support a variety of charitable organizations, as recommended by the donors, primarily in the communities served by Main Street Community Foundation.



**Jill Lynne Shackett**

### **Jill Lynne Shackett Leadership & Learning Award Fund**

Jill Lynne Shackett became a

teacher in 2001 and taught at South Side School in Bristol, Connecticut. This designated fund was established to honor the memory of Jill, who passed away unexpectedly at the young age of 35, and to honor the students in the school that meant so much to her. An annual grant will be distributed to South Side School to provide awards to fifth graders moving up to middle school to assist with the transition. Students chosen for these awards will display a positive attitude, initiative, kindness, participation in school service activities, leadership and respect.



### **Swicklas Family Scholarship Fund**

This scholarship Fund was established in 2022 by lifelong Plymouth resident John Swicklas to honor his family while continuing his love of teaching. John is a former Plymouth Public Schools teacher, having taught sixth grade at the former Harry S. Fisher Middle School and retiring in 2001. He also coached basketball and baseball. This scholarship will give Plymouth residents the opportunity to pursue a career in the field of education.



**Craig Yarde**

### **The Craig Yarde Scholarship Fund**

This scholarship fund was established to honor the memory of Craig Yarde, the co-founder of Yarde Metals, Inc., which started in Bristol, Connecticut in 1976. He was a well-known community leader

who championed hard work and philanthropic efforts throughout the Bristol community. Craig personified entrepreneurial spirit, continual learning and self-achievement, and this fund is created for those who embody these characteristics. A scholarship will be awarded annually to a resident of Bristol.

# Becoming a Donor/Establishing a Fund

There are many ways to donate to Main Street Community Foundation to support worthwhile charitable organizations and causes in our service area of Bristol, Burlington, Plainville, Plymouth, Southington and Wolcott, Connecticut. The Foundation offers a range of personalized services to help donors fulfill their charitable goals. As partners in philanthropy, we work with each donor to establish a fund or gift plan without complex administrative burdens.

## Give to an Existing Fund

You can support the Foundation's ongoing work with an unrestricted gift of any amount. Contributions can also be made to any of the Foundation's permanent endowment funds which benefit a diverse range of charitable purposes.

## Establish a New Fund

Our donors are individuals, families, companies and charitable organizations. You can establish a fund using a variety of gift-giving vehicles, including: cash, stock, retirement assets, other tangible personal property, bequests and other planned gifts. Most new endowment funds can be established with a minimum donation of \$10,000; to establish a new scholarship fund, the minimum is \$25,000. This gift can be given as a lump sum or over a period of time during your life. You may also leave charitable assets upon your passing in the form of a bequest in a will or trust, retirement plan designations or beneficiary designation in a life insurance policy. A fund can be established as a permanent endowment or as a temporary fund in which income and principal will be distributed.

### Our flexible fund options include:

#### ▲ UNRESTRICTED COMMUNITY FUNDS

Your gift is flexible and responsive to emerging and changing community needs. You place no restrictions on your gifts and leave decisions about charitable use of the funds to the Foundation.

#### ▲ FIELD OF INTEREST FUNDS

You have the opportunity to support a broad category of need such as the arts, healthcare, education, environment or a specific geographic area. Grant recipients are selected by the Foundation's Distribution Committee.

#### ▲ DONOR ADVISED FUNDS

You actively participate in grantmaking by recommending charitable organizations to receive grants. Foundation staff assists you by researching grant requests and connecting you with potential grant recipients.

#### ▲ DESIGNATED FUNDS

You designate support for a specific charitable organization. If the named charity ceases to exist, another organization with a similar purpose is selected by the Foundation's Board of Directors to ensure your purpose for giving will be honored in perpetuity.

#### ▲ AGENCY ENDOWMENT FUNDS

Established by a nonprofit organization as a means to protect their charitable dollars for the future and to ensure an annual source of support for their programs and operations.

#### ▲ SCHOLARSHIP FUNDS

You can establish a named fund for any level of education. You may designate a particular school or field of study and select eligibility criteria.

#### ▲ SUSTAINABILITY FUNDS

You make permanent gifts that strengthen the Foundation's role as a funder, a community leader, convener and advocate.

## Donor Services

The Main Street Community Foundation provides permanent, professional administration of charitable funds without the expense or effort of establishing a private foundation. All assets are professionally managed with oversight by the Investment Committee and Board of Directors. There is no cost to establish a fund. There is a modest management fee which supports the administrative operations of the Foundation. Your benefits include:

- Choice of fund type and fund name
- Grantmaking support and counsel
- Administration of gifts and grants
- Maximum tax advantages allowed by law
- Prudent investment management
- Permanent recognition or anonymity at donor's discretion

## Additional Services

The Foundation can assist private foundations or other grantmaking institutions in a variety of ways that include:

- Administration of grantmaking programs
- Project review for funding consideration
- Advisement on community needs and priorities
- Assistance to private foundations to meet pay-out requirements



# CORNERSTONE SOCIETY

*If you have included Main Street Community Foundation in your estate plan and would like to be included in the Main Street Cornerstone Society, please contact the Foundation office at 860.583.6363.*

## Leaving a Legacy Through Bequests and Planned Giving

Main Street Community Foundation is built on the dreams and desires of people who live and work in this area. For some people, the desire to create a legacy comes during their life as a current gift. For others, these legacies are shaped by the donor as future bequests or planned gifts. And still at other times, a celebratory or tragic event, such as a retirement or sudden death, will be the impetus for honor or memorial gifts that may be used as the beginning of an endowed fund in a loved one's name. Large or small, all of these gifts enhance the quality of life in your community for generations to come.

A cornerstone provides a strong support to a structure for its future stability. Laying this groundwork for the future is critical.

Like this permanent support, Cornerstone Society members lay the groundwork for the organizations and causes they care about most, while also ensuring the future stability of the Foundation.

The opportunity to give later is simple. You can leave a bequest to the Main Street

Community Foundation for the causes you care about in a will or trust, through a retirement plan designation, life insurance beneficiary designation, remainder interest in real estate, or other planned giving vehicles.

We are pleased to recognize the following very generous individuals who have made or have communicated their plans to leave a bequest to the Foundation in their will, estate plan or other deferred gift.

### Cornerstone Society Members

Anonymous 1  
 Anonymous 2  
 Anonymous 3  
 Anonymous 4  
 Anonymous 5  
 Anonymous 6  
 Anonymous 7  
 Anonymous 8  
 Anonymous 9  
 Anonymous 10  
 Robert J. Alim  
 Tom & Melanie Barnes

Sidney M. Bernard\* & Edward J. Miller  
 Whit & Jarre Betts  
 Robert C. Boudreau  
 Ken Burns  
 Robert & Rebecca Caiaze  
 Father Salvatore Cavagnuolo  
 Dr. Ann Clark  
 Peter & Eileen Engels  
 Karen Elaine Finder  
 Terry\* & Marguerite Fletcher  
 Mark & Michelle Gibson  
 David Greenleaf

Bill & Anita Hamzy  
 Gayle Kall  
 Hal Kilby  
 Joan Lincoln  
 Susan Mazer  
 Laura Schlesinger Minor  
 Janis Neri  
 Robert & Ella Mae Packard  
 Richard E. & Margaret W. Palarczyk  
 Lynne M. Peters  
 David & Kathy Preleski

Kevin Prior  
 Jeanne Radcliff  
 Daniel\* & Patricia Saccu  
 Susan & Ronald Sadecki  
 Noreen Schumann  
 John E. Smith  
 Bill & Kim Tracy  
 Karen Ann Varasconi  
 Dr. Joan T. Wallace  
 Leon & Susan W. Woiciechowski

*\*deceased*

### Bequests Fulfilled

Carlyle & Elizabeth Barnes  
 Irene Brzezinski  
 Raymond & Lorraine Corsini  
 Roland & Shirley Dumont

Mark M. Keating  
 David Kushlan  
 Richard Lass  
 Elizabeth I. Matt

Robert & Carmen Merriman  
 Al & Joan Monico  
 Eva M. Pierce  
 Don & Betty Radcliff

David Reidy  
 Peter S. Saman  
 Glo Sessions  
 Elizabeth M. Tyrrell



# What To Give

An outright gift to the Main Street Community Foundation is the simplest way to make a difference in the community you care about.

You can donate cash, stocks, bonds, real estate or other tangible personal property. Most charitable gifts qualify for maximum tax advantages under federal law.

While many people give liquid assets, such as cash, giving other assets may be better for you and should also be considered.

Planning wisely for the final distribution of stocks, IRAs or another retirement plan, life insurance, your home, vacation home, business, automobile(s), boats, jewelry, checking and savings accounts, can reduce unnecessary federal, state and property taxes your heirs may have to pay. Be sure to consult your professional advisor for guidance.

## Cash

A gift of cash is the easiest way to give. The foundation accepts cash, checks and money orders. Credit cards are also accepted when donating online. Each donor receives a tax acknowledgement for the full amount.

*Plan ahead. You will maximize your benefits, avoid unnecessary taxes and gain peace of mind.*

## Securities/Stocks

Appreciated securities are ideal to donate. You avoid the capital gains inherent in selling the stocks yourself and can deduct the current fair market value without having to pay tax on the appreciation (provided you have owned the asset at least a year and a day).

## Retirement Fund Gifts

Retirement plan assets, such as individual retirement accounts (IRAs), are among the most expensive for your family to inherit. They are subject to income taxes (state and federal), and may be subject to estate and generation-skipping transfer taxes. These combined tax hits can erode the value, leaving as little as 30 percent for your beneficiaries.

When you donate your IRA to MSCF you preserve 100 percent of its value.

## IRA Charitable Rollover

If you are 70 ½ or older, a qualified charitable distribution from your IRA can count to satisfy all or part of your annual minimum required distribution.

## Life Insurance

Life Insurance can provide a simple means for making an outright, tax-deductible gift to MSCF without incurring out-of-pocket expenses.

You may name the foundation:

- ▲ As owner and beneficiary of an existing policy;
- ▲ Designate us as a percentage beneficiary;
- ▲ Give the policy outright; or
- ▲ Purchase a new one and pay the premiums as a gift to the foundation.

All but revocable designations entitle the donor to a tax deduction.

## Real Estate

Besides saving taxes, giving a residence, vacation home, farm acreage, or vacant lot can relieve you of sales and property management costs and real estate taxes.

## Personal Property

Personal property such as jewelry, artwork, collectibles, and other assets can also be used to fund gifts.



# EFFECTIVE GRANTMAKING

Since Main Street Community Foundation's establishment in 1995, the Foundation's grant programs have greatly improved the quality of life in the Connecticut communities of Bristol, Burlington, Plainville, Plymouth, Southington and Wolcott for now and generations to come. In response to community needs, and in partnership with local organizations, grants from MSCF are made for basic needs, access to opportunities and programs that build vibrant communities.

MSCF administers several grant programs and welcomes applications from organizations to support charitable activities or programs. Guidelines are available for each grant program at [www.mainstreetfoundation.org](http://www.mainstreetfoundation.org).

The distribution process for grants from Money in Motion, Immediate Response and Donor Advised funds continues throughout the year as requests or special initiatives are presented to the Foundation. Scholarships are available to individuals pursuing educational and career opportunities in a variety of areas and at varying levels of education and training.



# 2022 Grants Awarded

From January 1, 2022 through December 31, 2022, Main Street Community Foundation has distributed **\$2,337,178** in grants and scholarships to support many worthy causes and organizations in your community.

## MONEY IN MOTION GRANTS - \$22,500

### **Bristol Hospital Foundation - \$10,000**

Fifth and final year of a \$50,000 commitment to support the Emergency Center Renovation and Expansion Project

### **Connecticut Public - \$2,500**

Patron Sponsor of the Election 2022 Debate Series

### **The RiseUP Group - \$5,000**

Lead Sponsor of the MLK39 Mural in Bristol

### **United Way of West Central CT - \$5,000**

2022 Walsh Summer Work Experience Program for Bristol Youth

## GENERAL CYCLE GRANTS - \$163,535

### **American Clock & Watch Museum - \$2,400**

Restoration of 3 stained glass windows from the E. Ingraham Clock Company to be displayed in the Ingraham Memorial wing of the museum located in Bristol

*Bristol Brass General Grant Fund*

### **Animal Rescue Foundation, Inc. (ARF) - \$3,000**

Spay and neuter surgeries and emergent medical care for cats and dogs living in the shelter located in Plymouth

*Elizabeth I. and Louis J. Matt Animal Protection Fund*

### **Army's Legacy Animal Rescue - \$1,000**

Spay and neuter surgeries for homeless dogs in foster care in the Foundation's service area

*Elizabeth I. and Louis J. Matt Animal Protection Fund*

### **Boys & Girls Club of Bristol - \$6,000**

Be A Star: Mental Health Awareness and Bullying Intervention program

*Douglas and Noreen Schumann Special Interest Fund - \$4,250*

*Dumont Family Charitable Fund - \$1,750*

### **Brian's Angels Homeless Outreach - \$2,000**

Assist homeless clients in Bristol to secure state issued identification cards

*Gnazzo/Reidy Charitable Fund*

### **Bristol Adult Resource Center - \$3,650**

Commercial freezer for the Hidden Café  
*Pat & Bob Wollenberg Charitable Fund*

### **Bristol Child Development Center - \$4,963**

Operating support for summer day camp provided to children ages 5-10 years old

*Bristol Savings Bank Fund - \$3,633*

*Turkus Family Fund - \$1,330*

### **Bristol Choral Society - \$1,700**

Replacement of concert attire for members  
*Gnazzo/Reidy Charitable Fund*

### **Bristol Little League - \$3,470**

Installation of irrigation system for Field 2 in Forestville  
*Malerbo Children's Field Maintenance Fund*

### **Bristol Girls Little League Softball - \$6,000**

Installation of safety netting along fencing to protect spectators

*Malerbo Children's Field Maintenance Fund*

### **Bristol Historical Society - \$2,500**

Archival boxes and shelving to ensure proper preservation of collection items

*Stephen and Katherine Saman Memorial Fund*

### **Bristol Police Department - \$2,460**

Support for the Bristol Police emotional support dog program and sensory kits to assist people in crisis

*Bristol Brass General Grant Fund - \$2,060*

*Tedesco-Gallant Charitable Fund - \$400*

### **Bristol School Readiness Council - \$2,052**

Mini voice amplifiers to improve student's language and speech development

*Fuller and Myrtle Barnes Fund for Education*

### **Burlington Volunteer Fire Department - \$1,600**

Two portable battery-powered light towers to illuminate an active scene and improve safety conditions

*James R. Parker Trust*

### **Community Counseling Centers of Central CT - \$2,050**

Therapeutic Arts Group for teen girls living in the Foundation's service area

*Douglas and Noreen Schumann Special Interest Fund*



### **Early Childhood Collaborative of Southington - \$6,000**

Conscious Discipline trauma-informed, social emotional program offered to families and childcare providers in Southington

*KAWFY Memorial Fund*

### **Family Resource Center of Southington - \$5,000**

Full STEAM Ahead school readiness program

*KAWFY Memorial Fund*

### **Grace Baptist Church - \$3,420**

Grace Pantry program to provide fresh food items including meat and produce to residents of Bristol and surrounding towns

*Edward W. and Audrey K. Mink Memorial*

*Fund - \$3,000*

*Ronald F. & Emilie P. Duhaime Family Fund - \$420*

### **Healing Meals Foundation - \$3,440**

Healthy Meals program providing nutritious, organic meals to low-income residents living with a serious health condition in the Foundation's service area

*Pat & Bob Wollenberg Family Fund for the Community*

### **Human Resources Agency of New Britain - \$4,438**

Operating support for the addition of a Bristol-based coordinator for the Volunteer Income Tax Assistance (VITA) program

*Bristol Savings Bank Fund*

### **Imagine Nation, A Museum Early Learning Center - \$5,000**

Imagine Nation Inspires Life-Time Learners program including in-person workshops and community outreach programs in the Foundation's service area

*Bristol Brass General Grant Fund - \$4,300*

*Jay & Elizabeth Tyrrell Fund for the Arts - \$700*

### **Junior Achievement of Southwest New England, Inc. - \$3,500**

Financial literacy, workforce readiness and entrepreneurship programming at Joseph A. DePaolo Middle School in Southington

*KAWFY Memorial Fund*

*continued on next page*

**Junior Women's Club of Wolcott - \$2,000**

Essential household items for women and children from Wolcott transitioning from a domestic violence emergency shelter to permanent housing  
*Bristol Brass General Grant Fund*

**Literacy Volunteers of Central CT - \$5,000**

Greater Bristol Literacy Project serving low to moderate income residents in Bristol, Plainville and Burlington  
*Bristol Brass General Grant Fund*

**Lewis S. Mills Crew Booster Club - \$4,000**

Oars for the Kailey Prenoveau Memorial Boat  
*James R. Parker Trust*

**New Britain Museum of American Art - \$2,500**

Access to the Arts program for Wolcott upper elementary public-school students  
*Fuller and Myrtle Barnes Fund for Education*

**Operation Fuel, Inc. - \$5,000**

Emergency energy assistance for low-income residents in the Foundation's service area  
*Bristol Savings Bank Fund - \$3,239*  
*Bristol Brass General Grant Fund - \$1,761*

**Plainville Community Food Pantry - \$2,940**

Operating support for the intervention, outreach and referral program  
*Jim & Eleanor Frawley Community Fund*

**Plymouth Community Food Pantry - \$5,000**

Healthy Options Program Plus program to provide non-perishable dairy and produce to program clients  
*Bristol Savings Bank Fund - \$3,980*  
*Jaspersohn Family Memorial Fund - \$1,020*

**Plymouth Volunteer Ambulance Corps - \$2,377**

Replacement of an Automated External Defibrillator (AED)  
*Bristol Brass General Grant Fund - \$1,867*  
*Karen and Kim Murphy Family Charitable Fund - \$510*

**Productions for Change - \$1,870**

Creation of a promotional video for St. Vincent De Paul Mission of Bristol  
*Angela and Al Caruso Family Charitable Fund - \$1,390*  
*Formagioni-Lodovico Family Fund - \$480*

**Reach Out and Read - \$4,000**

Bristol Rx for Success! -Literacy Initiative for children ages 0-5 in collaboration with pediatric clinics in Bristol  
*Fuller and Myrtle Barnes Fund for Education - \$2,548*  
*Bristol Brass General Grant Fund - \$1,452*

**Shepard Meadows Equestrian Center - \$4,500**

Scholarships for military veterans living in the Foundation's service area to participate in horsemanship programs  
*Bristol Brass General Grant Fund - \$4,030*  
*Terry and Marguerite Fletcher Family Fund - \$470*

**Southington Community Cultural Arts - \$2,798**

Two potter wheels for the pottery program  
*KAWFY Memorial Fund*

**Southington Girls Softball League - \$2,000**

Upgrades to Field 1 including drainage and grading  
*KAWFY Memorial Fund - \$1,620*  
*JoAnn & David Mills Family Fund - \$380*

**St. Vincent DePaul Mission of Bristol - \$5,175**

Technology and related supplies for new Resource Room for use by clients  
*Smith Family Charitable Fund*

**Tabernacle Christian Church - \$4,000**

Giving Back Food Pantry program to provide groceries and fresh foods to food-insecure residents of Southington and surrounding areas  
*Bristol Brass General Grant Fund - \$2,000*  
*KAWFY Memorial Fund - \$2,000*

**Terryville Plymouth Little League - \$5,000**

Concession Stand renovation and repair  
*Bristol Brass General Grant Fund*

**Terryville Public Library - \$500**

1,000 Books before Kindergarten literacy program  
*Hamzy Family Charitable Fund*

**The Children's Museum, Inc. - \$2,500**

Science Achievement for All program for K-8th grade students in Bristol public schools  
*Fuller and Myrtle Barnes Fund for Education*

**The Palace Theater Group - \$2,500**

School performance of My Fair Lady at the Palace Theater for high school students from Bristol, Southington and Wolcott  
*Bristol Savings Bank Fund - \$1,710*  
*Southington Arts Council Legacy Fund - \$790*

**The Salvation Army - \$5,000**

Creative Arts and Music (CAM) Academy for Bristol youth  
*Douglas and Noreen Schumann Special Interest Fund - \$4,410*  
*Margaret Haberman Memorial Fund for Music - \$590*

**Town of Burlington - Animal Control - \$752**

Dog beds for the shelter  
*James R. Parker Trust*

**United Way of West Central Connecticut - \$3,000**

Six new laptops for the Volunteer Income Tax Assistance (VITA) program offered to residents of Bristol, Burlington, Plainville and Plymouth  
*Bristol Brass General Grant Fund - \$2,620*  
*Pat & Bob Wollenberg Family Fund for the Community - \$380*

**Veterans Strong Community Center - \$5,000**

Operating support for direct outreach services for veterans in the communities served by the Foundation  
*Bristol Brass General Grant Fund - \$3,370*  
*Paige Wartonick Laferriere Memorial Fund - \$1,300*  
*Becker Family Fund - \$330*

**West Cemetery Association of Bristol CT - \$1,000**

Operating support for technical assistance with application for the State Register of Historic Places  
*Stephen and Katherine Saman Memorial Fund*

**Wheeler Clinic - \$5,000**

Operating support for a Peer Specialist in the *Walk With Me* program, a behavioral health treatment program for LGBTQ+ adolescents residing in the Foundation's service area  
*Bristol Brass General Grant Fund*

**Wolcott Citizens Against Substance Abuse (CASA) - \$1,500**

CASA Family Togetherness Night program  
*Pat & Bob Wollenberg Family Fund for the Community - \$970*  
*Douglas and Noreen Schumann Special Interest Fund - \$530*

**Zion Lutheran Evangelical Church - \$2,980**

Shelving and equipment for the Meals for Neighbors food pantry and soup kitchen serving Bristol and surrounding towns  
*Ciccarelli-Vitale Community Advancement Fund*

**BRADLEY HENRY BARNES & LEILA UPSON BARNES MEMORIAL TRUST GRANTS - \$897,243****Bread For Life - \$50,000**

Meal program support for food-insecure clients including packaging and delivery costs

**Bread For Life - \$18,000**

Emergency food needs outside of the regular meal program

**Early Childhood Collaborative of Southington - \$25,000**

Health, safety and well-being initiatives for caregivers and children

**Friends of Southington Community Services - \$15,000**

New commercial refrigerator and commercial freezer, grocery gift-cards, and emergency food purchases for the food pantry

**Prudence Crandall Center, Inc. - \$50,000**

Domestic Violence Intervention & Prevention Services available to Southington residents

**Southington-Cheshire Community YMCAs - \$100,000**

Unrestricted operating support to maintain and expand programs encouraging healthy lifestyles

**Southington-Cheshire Community YMCAs - \$25,000**

Support increased construction costs of splash pad at Camp Sloper to enable healthy recreation

**Southington-Cheshire Community YMCAs - \$3,720**

Youth Mental Health First Aid trainings for YMCA staff and Southington community members

**Southington Community Cultural Arts - \$50,000**

Continuation of the All Access program for adults with learning differences

**Southington Rotary Trust - \$50,750**

Replacement of 25 Automated External Defibrillators (AEDs) for the Southington Police Department

**The Arc of Southington - \$80,000**

Construction of a pavilion to accommodate outdoor programming for clients and the community

**The Hospital of Central Connecticut - \$70,000**

Renovations, equipment, furniture, and signage for a new Child and Adolescent Behavioral Health Outpatient Clinic in downtown Southington

**The LEAF (Lewis Educational Agricultural Farm) - \$60,000**

Operating support for school and community programs focusing on agricultural education and providing a healthy and sustainable food supply in Southington

**United Way of Southington - \$84,445**

Continuation of Senior Transportation Services program providing free transportation to Southington residents ages 55 and over or disabled, to help maintain independence

**University of Connecticut Foundation - \$150,000**

Establish a Child and Family Development program to provide a comprehensive array of behavioral health services and educational resources for families and school personnel in Southington

**UR Community Cares, Inc. - \$5,000**

Establish pilot UR Community Cares Program in Southington to provide community-based, volunteer support to the elderly and people with disabilities

**Wheeler Clinic - \$57,578**

Southington Community Health Outreach Project

**Community Leadership Sponsorships - \$2,750**

**BURLINGTON COMMUNITY FUND GRANTS - \$5,000**

**Burlington Historical Society - \$750**

Spinning Wheels restoration project to enhance educational programs

**Imagine Nation, A Museum Early Learning Center - \$1,750**

Imagine Nation Loves Burlington program providing community-based STEAM workshops and activities

**New Britain Museum of American Art - \$2,500**

Access to the Arts program for Regional School District #10 students

**MEN & BOYS' FUND GRANTS - \$11,890**

**Boys & Girls Club of Bristol - \$1,000**

Passport to Manhood program

**Bristol Family Resource Centers - \$1,700**

Expansion of WatchDOGS Program for Dads and male guardians

**Kelly's Kids - \$2,000**

Wolcott Youth Services Bureau pilot program

**The Bridge Family Center - \$1,300**

Activities to promote bonding for boys living in Hastings House respite home in Wolcott

**The Children's Law Center - \$2,000**

Legal representation of male children in family court

**YWCA of New Britain - \$3,000**

Sexual Assault Crisis Services - Men & Boys Advocacy program

**Men & Boys' Immediate Response Fund - \$890**

Provide for emergency needs for men and boys residing in the Foundation's service area

**JAMES R. PARKER TRUST GRANTS - \$8,168**

**Boy Scout Troop 55 - \$1,000**

Camping Equipment to facilitate outdoor educational programs

**Burlington Historical Society - \$1,250**

Spinning Wheels restoration project to enhance educational programs

**Lewis S. Mills Football Boosters - \$2,000**

Maintenance and repair of equipment used in football practice

**Town of Burlington Animal Control - \$918**

Medical care of animals in the shelter

**Town of Burlington Social Services - \$3,000**

Food and fuel assistance for low-income residents of Burlington

**PLAINVILLE COMMUNITY FUND GRANTS - \$12,000**

**Imagine Nation, A Museum Early Learning Center - \$1,500**

Imagine Nation Loves Plainville outreach programs for children at the Plainville Public Library and the Plainville Parks & Recreation department

**Louis Toffolon Elementary School - \$1,500**

Construction of a cold frame/greenhouse to extend growing season and provide additional learning opportunities for students and families at Louis Toffolon Elementary School

**New Britain Museum of American Art - \$1,500**

Access to the Arts program for Plainville kindergarten students

**PARC, Inc. - \$2,300**

PARC Adult Life Skills program for Plainville adults with developmental disabilities



**Pequabuck River Watershed Association - \$1,700**

Civil Engineering Tour for Plainville High School students enrolled in the UConn Environmental Science Early College Experience

**Plainville Wind Ensemble - \$1,500**

Free Veteran's Day Concert at CCSU

**Prudence Crandall Center, Inc. - \$2,000**

Domestic Violence Intervention & Prevention Services available to Plainville residents

## WOMEN & GIRLS FUND GRANTS - \$48,553

### Brian's Angels Homeless Outreach - \$1,000

Warm winter outerwear for women and girls experiencing homelessness

### Bristol Family Resource Centers - \$4,600

Girl Up! - a leadership development initiative for girls ages 6-12 in three Bristol schools  
*Barbara Hackman Franklin Fund for Women Women & Girls Fund*

### Bristol Historical Society - \$600

*Celebrating Local Firsts* event, an intergenerational program

### Girl Scouts of Connecticut - \$3,000

Starter Troop pilot program to establish three new troops in the Foundation's service area

### Kelly's Kids - \$1,000

Wolcott Youth Services Bureau pilot program

### PARC - \$5,000

*Aging with Disabilities* program for senior women in Plainville

### Plymouth Community Food Pantry - \$2,400

Supplies for the Community Diaper Bank including diapers, wipes, food and formula

### Polish American Foundation of Connecticut - \$5,153

Humanitarian support for women and children affected by the war in Ukraine  
*Women & Girls Immediate Response Fund (special collection at annual WOW event)*

### Prudence Crandall Center - \$5,000

Emergency shelter for victims of domestic violence in the Foundation's service area

### Shepard Meadows Equestrian Center - \$5,400

Mothers and Daughters Equine Assisted workshop series to promote bonding

### St. Vincent De Paul Mission of Bristol - \$1,900

The Lunch Table program which fosters dignity, independence and friendship for women experiencing homelessness  
*Women & Girls Fund  
John & Gloria DiFrancesco Fund for Women and Girls*

### Southington Valley Midget Football League - \$4,000

Scholarships and safety head gear for the Powder Puff League

### The Agape House - \$2,000

Prepared meals for women and girls experiencing homelessness

### Tunxis Community College - \$7,500

*Launch Your Leadership Journey* program to develop leadership skills in female students enrolled at Tunxis Community College

## GRANTS TO SUPPORT COMMUNITY INITIATIVES - \$2,660

### Main Street Community Foundation - \$1,000

Community support grant for leadership initiatives/ sponsorships in six-town service area  
*Bristol Savings Bank Fund*

### United Way of West Central CT - \$1,660

Walsh Summer Work Experience Program 2023 startup support  
*Wally Barnes Fund for Community Leadership Initiatives*

## FIELD OF INTEREST FUND GRANTS - \$23,286

### Amy's Angels - \$1,000

Support individuals and families impacted by serious illness or injury  
*Bristol Talks Teal Fund*

### Army's Legacy Animal Rescue and Sanctuary - \$1,560

Medical Care for animals rescued from or currently sheltered in the Foundation's service area  
*Elizabeth I. and Louis J. Matt Animal Protection Fund*

### Bread for Life - \$1,600

*Southington Community Memory Café* program offered in collaboration with the Southington Public Library for people living with dementia and their caregivers  
*KAWFY Memorial Fund*

### City of Bristol/Parks and Recreation - \$1,000

Arts in the Park event for children in collaboration with the Bristol Parks & Recreation's Summer Concert Series  
*Sid Bernard & Ed Miller Children's Fund for the Visual Arts*

### Environmental Learning Centers of CT - \$960

Creation and maintenance of animal and plant habitats on the Pigeon Hill property  
*Merriman Family Fund*

### Friends of Southington Animal Control - \$1,000

Stackable washer and dryer for shelter  
*Elizabeth I. and Louis J. Matt Animal Protection Fund*

### Friends of the Bristol Connecticut Animal Shelter - \$1,000

Medical care of animals in the shelter  
*Elizabeth I. and Louis J. Matt Animal Protection Fund*

### New England Carousel Museum - \$760

Summer art program for youth at the museum  
*Sid Bernard & Ed Miller Children's Fund for the Visual Arts*

### Region 10 Make A Mark, Inc. - \$2,424

Educational enrichment opportunities in Region 10 schools  
Make A Mark Region 10 Enrichment Fund

### Turn the Towns Teal - \$250

Support the national campaign to promote awareness of ovarian cancer and its symptoms  
*Bristol Talks Teal Fund*

### Rental Assistance for low-income residents of Plainville - \$3,000

Plainville Housing Assistance Fund

### Southington Community Cultural Arts - \$1,000

Financial assistance for youth attending summer art classes  
*Sid Bernard & Ed Miller Children's Fund for the Visual Arts*

### Southington Manna Fund - \$5,212

Emergency Housing for temporarily displaced persons in need  
*KAWFY Memorial Fund*

### Southington Public Library - \$1,500

*The Literacy of Laughter: A Community Gets Schooled in the Art of Comedy* program educating community members in creative ways to improve communication and process collective traumas  
*KAWFY Memorial Fund - \$840  
Calvanese Foundation Green & White Fund for Behavioral Health - \$660*

### Summer Music Lessons for Bristol Public School Students with Financial Need - \$1,020

*Dan Cistulli Memorial Music Fund*

## DESIGNATED FUNDS AND AGENCY ENDOWMENT GRANTS - \$376,605

### American Clock & Watch Museum - \$9,230

*American Clock & Watch Museum Fund*

### Boys & Girls Club of Bristol - \$1,300

*Edward Ingraham Fund*

### Boys & Girls Club of Bristol - \$5,550

*Sky Bight Foundation Fund for the Bristol Boys & Girls Club*

### Boys & Girls Club of Bristol (Cambridge Park Clubhouse) - \$500

*Ercole and Pamela Labadia Fund for the Boys & Girls Club*

### Boys & Girls Club of Bristol Family Center (Youth of the Year Award) - \$1,170

*Charles Kushlan Memorial Fund*

### Bristol Adult Resource Center - \$4,060

*Bristol Adult Resource Center Fund*

### Bristol Adult Resource Center - \$7,290

*Pat & Bob Wollenberg Charitable Fund*



**Bristol Family Resource Centers - \$520**  
*Mama Sandy Caggiano Fund*

**Bristol Hospital Foundation - \$9,170**  
*Bristol Hospital Development Foundation Fund*

**Bristol Hospital Foundation - \$48,000**  
*Frederick Manross Trust*

**Bristol Preschool Child Care Center - \$495**  
*Early Learning - A PET Project Fund*

**Burlington Historical Society - \$500**  
*Burlington Historical Society Fund*

**Burlington Library - \$950**  
*Burlington Library Association Fund*

**Business Education Foundation - \$770**  
*Bob and Carol Messier Family Fund*

**City of Bristol/Bristol Public Libraries- \$4,550**  
*Bristol Libraries Fund*

**City of Bristol/Bristol Public Library- \$30,580**  
*Samuel Goodsell Library Fund*

**City of Bristol/Manross Memorial Library - \$51,485**  
*Manross Memorial Library Fund*

**City of Bristol/Manross Memorial Library - \$48,000**  
*Frederick Manross Trust*

**City of Bristol/Cemetery Commission - \$850**  
*Sarah Norton Pardee Fund*

**City of Bristol/Parks and Recreation - \$26,590**  
*Samuel Goodsell Park & Playground Fund*

**City of Bristol Youth and Community Services/  
 Parent & Child Center - \$7,000**  
*Bristol Health Fund for the Parent & Child Center*

**Connecticut Historical Society - \$410**  
*Connecticut Quilt Registry Legacy Fund*

**Compassionate Friends of Central  
 Connecticut - \$1,000**  
*Kai Alejandro Yagual Betts Memorial Fund*

**Environmental Learning Centers of  
 CT, Inc. - \$9,530**  
*Environmental Learning Centers of CT, Inc. Fund*

**Environmental Learning Centers of CT, Inc. - \$560**  
*Estela Wilderness Education Fund*

**Hypertrophic Cardiomyopathy Association - \$890**  
*Tyler James Gingery Memorial Fund*

**Imagine Nation, A Museum Early Learning  
 Center - \$495**  
*Early Learning - A PET Project Fund*

**Immanuel Lutheran School - \$3,280**  
*Immanuel Lutheran Alumni Tuition Assistance Fund*

**New England Carousel Museum -  
 Fire Museum - \$13,580**  
*Hap Barnes Fund for Fire Safety and Prevention*

**Opportunity House - \$7,150**  
*Pat & Bob Wollenberg Family Fund for  
 Opportunity House*

**Plymouth Historical Society - \$940**  
*Plymouth Library Association, Inc. Fund*

**Prudence Crandall Center - \$390**  
*Eva M. Pierce Memorial Charitable Fund*

**Southington-Cheshire Community YMCAs - \$5,810**  
*Bradley Henry Barnes Fund for the Southington  
 Community YMCA*

**South Side School - \$500**  
*Jill Lynne Shackett Leadership & Learning Award Fund*

**St. Andrew Evangelical Lutheran Church - \$1,830**  
*St. Andrew Mission Endowment Fund*

**Town of Plainville - \$1,510**  
*Plainville Affordable Housing Corporation Fund*

**Tunxis Community College Foundation - \$33,100**  
*Bristol Career Center of Tunxis Community College  
 Endowment Fund*  
*Bristol Career Center of Tunxis Community College  
 Endowment Fund II*  
*Tunxis Community College Fund*  
*Tunxis Community College II Fund*

**United Way of West Central Connecticut - \$9,180**  
*United Way of West Central Connecticut Fund*

**West Cemetery Association - Barnes Memorial  
 Chapel - \$18,560**  
*Carlyle F. Barnes Memorial Chapel Trust*

**Wheeler Clinic - \$9,330**  
*Wheeler Clinic/Dennis Keenan Fund*

**DONOR ADVISED FUND GRANTS SUPPORTED  
 THE FOLLOWING ORGANIZATIONS AND  
 CHARITABLE INTERESTS - \$434,800**

- American Clock & Watch Museum
- American Legion Post 2
- Andy Roddick Foundation
- BEST
- Boys & Girls Club of Bristol
- Brian's Angels Homeless Outreach
- Bristol Hospital Foundation
- Bristol Senior Center
- Bristol Technical Education Center
- City of Bristol/Parks and Recreation
- Community Foundation of Middlesex County
- Connecticut Children's Medical Center Foundation
- Connecticut Foodshare
- Connecticut Forum
- Connecticut Historical Society
- Connecticut Science Center
- Dean College
- Deerfield Academy
- Dumont Family Charitable Fund
  - at Main Street Community Foundation
- Early Childhood Collaborative of Southington
- Educated Canines Assisting with Disabilities
- Edward W. and Audrey K. Mink Memorial Fund
  - at Main Street Community Foundation
- Environmental Learning Centers of CT, Inc.
- Fidelco Guide Dog Foundation
- First Congregational Church of Bristol
- Grace Baptist Church - Grace Food Pantry
- Hartford Stage Company
- Hartford Symphony Orchestra
- Joe Andruzzi Foundation
- John & Peggy Walsh Memorial Scholarship Fund
  - at Main Street Community Foundation
- Junior Achievement of Southwest New England
- Kai Alejandro Yagual Betts Memorial Fund
  - at Main Street Community Foundation
- Main Street Community Foundation
- Men & Boys' Fund at Main Street Community
  - Foundation
- National Conference for Community and Justice
- New England Carousel Museum
- Our Companions Domestic Animal Sanctuary
- Plainville Recreation Department
- Plymouth Department of Human Services
- Prudence Crandall Center
- Ronald McDonald House of CT
- Sergeant Alex Hamzy Memorial Fund
  - at Main Street Community Foundation
- Shepard Meadows Equestrian Center
- Southington-Cheshire Community YMCAs



Williston Northampton School  
 World Affairs Council of CT  
 Zion Lutheran Church - Meals for Neighbors

**IMMEDIATE RESPONSE FUND  
 GRANTS - \$11,068**

Bristol Board of Education Immediate Response Fund  
 Donna Borysewicz Fund for Women  
 Jean Sorey Fund for Single Parent Families  
 Karen DuCotey Fund for Kids  
 Leading Ladies Immediate Response Fund  
 Main Street Children's Fund  
 Men & Boys' Immediate Response Fund  
 The Werner Family Fund  
 Women & Girls Immediate Response Fund

**SCHOLARSHIP GRANTS - \$281,600**

**ADMINISTRATIVE ENDOWMENT FUND  
 GRANTS - \$38,210**

**Main Street Community Foundation - \$38,210**  
*Barnes Group 150th Anniversary Fund*  
*Dave & Edith Scarritt Fund*  
*Main Street Community Foundation Endowment Fund*  
*Yarde Metals Community Support Fund*

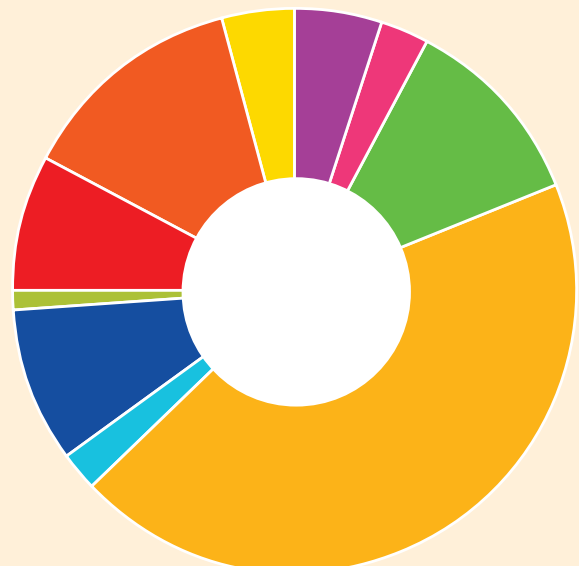
Stone Ridge Foundation  
 St. Vincent De Paul Mission of Bristol  
 Suchopar Family Fund at Main Street Community  
 Foundation  
 TheaterWorks  
 The Agape House  
 The Broad View Fund at Main Street Community  
 Foundation  
 The Bushnell

The Craig Yarde Scholarship Fund  
 at Main Street Community Foundation  
 The Salvation Army  
 United Way of West Central Connecticut  
 University of Connecticut Foundation  
 University of Hartford  
 Veterans Strong Community Center  
 Wally Barnes Fund for Community Leadership  
 Initiatives at Main Street Community Foundation

## Grants at a Glance

For the 2022 year, Main Street Community Foundation awarded grants totaling **\$2,337,178**

- 5%  Arts & Culture
- 3%  Community Development
- 11%  Education
- 44%  Health & Wellness
- 2%  Housing/Shelter
- 9%  Human Service
- 1%  Other
- 8%  Recreation/Youth Development
- 13%  Scholarships
- 4%  Workforce Development





# 2022 Scholarship Recipients

## **4 Burns Scholarship/ St. Joseph/St. Paul Fund**

Quinn Burns  
Andrew Shamber

## **Academic Achievement Award**

Hannah Aldieri  
Victoria Hudak  
Hannah Krueger

## **Christian Arndt Scholarship Fund**

Zoe Zappone

## **E. Bartlett Barnes Award of Journalism Fund**

Rebecca Dorsey  
Zoe Krueger  
JiaLiAn Stolfi  
Logan Zdon

## **Stanley P. Bitel Memorial Fund**

Erin Klem

## **Sylvia Bodak Memorial Scholarship Fund**

Lexi Michaud

## **Peter and Marjorie Bossi Educational Fund**

Micaela Guzman

## **Bowerman Scholarship Fund**

Jocelyn Dall'Aste

## **Bristol Boys and Girls Club Schulman Fund**

Stanley Cardona-Toledo  
Ramon Peters

## **Bristol Lions Club F. Fred Soliani Memorial Scholarship Fund**

Adrianna Dellaera

## **Bristol Lions Club/James J. Keating Scholarship Fund**

Jeremy Evanoski

## **Bristol Police Scholarship Fund**

Emma Lewis

## **Bristol Yale Club Scholarship Fund**

Matthew Badorek  
Sammi Bray  
Adrianna Dellaera  
Angel Jimenez  
Jia Xin Lin  
Lexi Michaud  
Hayden Michele  
Esther Minery  
Kha Ngo  
Nadia Rapp

## **Burlington Lions Charities Scholarship Fund**

Adam Ammirata  
Declan Bernetich  
Noah Dube

## **Alicia M. Butler Memorial Scholarship Fund**

Kiana Ouellette

## **Conn Acoustics Scholarship Fund**

Casper Muter

## **Peg Coughlin Nursing Scholarship Fund**

Paige Lavoie

## **Rit Croce Academic and Vocational Scholarship Fund**

Kayla Lachance

## **Richard A. DellaVecchia Scholarship Fund**

Emma Agli  
Emma Doran

## **Katherine Dobroczyński Memorial Scholarship Fund**

Natalia Gorski

## **Jeffrey Downes Memorial Scholarship Fund for the Trades**

Chadd Vontell

## **Karen Finder Scholarship Fund**

Michell Raphael

## **Carolyn Fisher Scholarship Fund**

Jessica Foster

## **Olivia Fusco Memorial Art Scholarship Fund**

Jillian Blaszk

## **Joann Galati Scholarship Fund for Education**

Ava LeBlanc

## **GE's Industrial Solutions Scholarship Fund**

Hailey Calder  
Sahana Ganesh  
Leah Mueller

## **Andrew and Murielle Giacomini Scholarship Fund**

Amaya Pagan

## **Azilda Hebert Music Scholarship Fund**

Micaela Guzman

## **Dorothy Micloskey Ives Award**

Madison Burns

## **Grace and Norma Joy Scholarship Fund**

Adrianna Dellaera

## **John Kalinoski Scholarship Fund**

Rebecca Dorsey

## **Kalt Moreau Family Scholarship Fund for Education**

Alyssa Gonzalez

## **KAWFY Memorial Scholarship Fund**

Sammi Bray  
Cooper Burdette  
Thomas Hayden  
Samantha Tito

## **Keating-Monaghan Memorial Scholarship Fund**

Ellie Abucewicz  
Joseph Dess Jr.  
Nicholas Haddon  
Gabriel Lehy  
Isabel Mejia  
Isaac Morehouse  
Silas Morehouse  
Alejandro Ojeda  
Fatima Rodriguez  
Gabrieal Rodriguez  
Sadie Sherman  
Isabella Wood  
Kaitlyn Wood

## **Lena M. & Peter L. Korotie Scholarship Fund**

Zola Cudjoe

## **Vincent T. Kozyrski Scholarship Fund**

Olivia Dossias

## **Sean Landry Memorial Basketball Scholarship Fund**

Dominick Dao

## **Julie Larese Bristol Tramps Scholarship Fund**

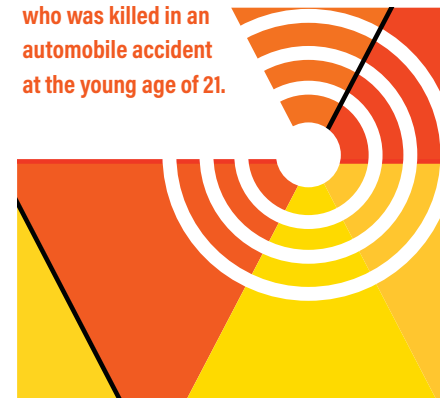
Ava Bouchard

## **Ray Machine Corp./Ray and Darlene Lassy Family Fund**

Zachary Stevenson



**Emma Agli excitedly greets Bob DellaVecchia and his daughter Zoey DellaVecchia as she receives a scholarship from the Richard A. DellaVecchia Scholarship Fund at the 2022 Scholarship Reception. This scholarship was established in 1989 and transferred to MSCF in 2002 in memory of Richard, Bob's brother and Zoey's uncle, who was killed in an automobile accident at the young age of 21.**



## **John J. and Doris Lazarik Memorial Scholarship Fund**

Angel Jimenez  
Sophia Nocera

## **Leger Initiative for Education Fund**

Anita Gryczewski

## **Dave Lepore Journalism Scholarship Fund**

Logan Zdon

## **Thérèse MacCallum "Great Kid" Scholarship Fund**

Alexandra Barner



2022 scholarship recipients were honored at the Foundation's Scholarship Reception held on June 22, 2022 at the DoubleTree by Hilton Hotel Bristol.

**Nicholas P. Maglio ACE  
(A Chance for Education) Fund**  
Alexsia Newman

**Malerbo Memorial Scholarship Fund**  
Elliott Anderson  
Patrick Badzioch  
John Crowley  
Zachary Cudjoe  
Zola Cudjoe  
Michael Decker  
Ainsley Fabrizio  
Chase Mendela  
Angela Ragaini  
Jordan Sirois  
Madison Sirois  
Brianna Wood  
Adam Zwolinski

**Maskery Family Scholarship Fund**  
Matthew Badorek

**Elizabeth I. and Louis J. Matt  
Medical Scholarship Fund**  
Gabriella Buonafede  
Grace D'Amato  
Lexi Michaud  
Brooke Treannie

**Robert E. and Angeline P.  
McCormack Scholarship Fund**  
Jillian Blaszk

**McMaster-Moulthrop  
Scholarship Fund**  
Hannah Aldieri  
Gabriella Buonafede  
Ashlee Crumrine  
MacKenzie Dumas  
Beckett Hennessey  
Victoria Hudak  
Martina Jagielski  
Hannah Krueger  
Charles Pittman  
Gabriella Watson

**Ken E. Micloskey Award**  
Nicholas Fusco

**Dave Mongillo Memorial/Golf  
Scholarship Fund**  
Cooper Burdette  
Sophia Swain

**Al and Joan Monico  
Scholarship Fund**  
Latifa Kone  
Ramon Peters

**NESMA Scholarship Fund**  
Dylan Bradley  
Emily Seeds

**AJR Nocera Memorial Fund**  
Stanley Cardona-Toledo  
Angel Jimenez

**Anthony Norton Scholarship Fund**  
Jessica Foster

**Scott W. Organ Student-Athletic  
Scholarship Fund**  
Olivia Dossias

**C. Henry Ozga Memorial  
Scholarship Fund**  
Dominick Dao

**Ralph Papazian Memorial  
Scholarship Fund**  
Alexsia Newman

**Estelle Delano Peterson  
Scholarship Fund**  
Zoe Zappone

**Dorothy Dewey Picard Music  
Scholarship Fund**  
Garret Millette

**Plymouth Community Club  
Scholarship Fund**  
Dominick Dao

**Alice C. Pulsifer Memorial  
Scholarship Fund**  
Emily Levesque

**Max and Ruth Rabin  
Scholarship Fund**  
Heddi Wells

**Radcliff Family Education Fund**  
Kerly Delgado  
Carter Dziedzic  
Lexi Michaud  
Heddi Wells

**Radcliff Plainville High School Fund**  
Kyle Badorek  
Matthew Badorek  
Jason Demmons  
Andrew Michalek

**Louis J. Rascoe Scholarship Fund**  
Jessica Foster

**Julie A. Roche Nursing  
Scholarship Fund**  
Lexi Michaud

**Douglas Roland Aid for the  
Trades Scholarship Fund**  
Maximus Autunno  
Joshua Hudak  
Michael Rinaldi

**Clement J. Roy Scholarship Fund**  
Brooke Treannie

**Saint Matthew School  
Scholarship Fund**  
Kiley Matero

**Lawrence (Larry) Scelza Memorial  
Scholarship Fund**  
Ashlyn Diorio

**Dora Schubert Scholarship Fund**  
Rebecca Dorsey

**Glo Sessions Fund for Art Education**  
Lorri Jackson

**Jill Lynne Shackett Educational  
Scholarship Fund**  
Lauren Aparo  
Ava LeBlanc  
Kiana Ouellette

**Southington Observer/StepSaver  
Scholarship Fund**  
Sammi Bray

**Jay and Elizabeth Tyrrell  
Scholarship Fund**  
Zoe Krueger

**Dr. Joan T. Wallace Prize for Highest  
Achievement in English at  
Southington High School**  
Amber Kohl

**John & Peggy Walsh Memorial  
Scholarship Fund**  
Makayla Cervantes  
Adrianna Dellaera  
Daniel Kitmanyen  
Alexsia Newman  
Sophia Nocera  
Brooke Treannie  
Treva Wishart

**Kristen Warner Scholarship Fund**  
Anika Mathur

**John Whitcomb Scholarship Fund**  
Makayla Cervantes

**Reverend Dr. Eddie C. Whitehead of  
Bristol CT - Reverend Dr. Martin  
Luther King Jr. Scholarship Fund**  
Lucy Bird  
Sidratul Muntaha

**Eva Brodowicz Wickwire Volunteer  
Scholarship Fund**  
Sydney Rodriguez

**Pat and Bob Wollenberg  
Scholarship Fund for Special  
Education**  
Linda Beaulieu  
Stephanie Tramontanis

**Yarde Metals Memorial  
Scholarship Fund**  
Chloe Cyr  
Jack Kozikowski  
Kate Kozikowski  
Jonathan Paige  
Danielle Regan  
Rachel Ross  
Jackson Vogel

Inspiring donors and community partners to foster a sustainable legacy of impactful **giving** by encouraging and promoting:

- ▲ Gift Planning
- ▲ Prudent Stewardship of Assets
- ▲ Effective Grantmaking
- ▲ Community Leadership

## COMMUNITY LEADERSHIP

The Foundation's community leadership efforts, also known as "Money in Motion," address a broad range of community goals. We identify opportunities within the community to support meaningful dialogue on issues affecting the towns we serve. We convene community members, assess changing needs, and propose action on critical concerns. In this way, we are able to develop collaborative solutions to meet emerging needs and provide support to what matters most to the people who live and work in the cities and towns of this region.



## Celebrating Bristol's Diversity

After conducting a DEI training with the MSCF Board of Directors, staff and volunteers in 2020, and incorporating MSCF's commitment to raise awareness around racial and social justice issues in the new strategic plan, the Foundation expanded its focus and created more direct efforts to support projects that promote diversity, equity, and inclusion in the local communities. In 2022, the Foundation was proud to be an inaugural sponsor for a mural project in Bristol to capture and celebrate the city's vibrancy and diversity. MSCF's Board of Directors kickstarted the fundraising campaign by awarding a \$5,000 grant from the Money in Motion Fund. The project, led by the RiseUp Group and the City of Bristol Arts and Cultural Commission, is one part of MLK39: Racial Equity Mural, a large project dotting Connecticut with 39 murals, one for each year of Rev. Dr. Martin Luther King Jr.'s life. The mural on Riverside Avenue features Rev. Dr. Martin Luther King Jr.; poet and civil rights activist Maya Angelou; and Bristol's own Barbara Hudson, the first Black curator of the Wadsworth Atheneum Museum of Art and executive director of the Amistad Foundation. MSCF previously supported a MLK39 mural in Southington in 2021.



## Meeting the Mental Health Needs of Southington Residents

With a sharp rise in depression and anxiety among families throughout the ongoing pandemic, the UConn Health Child and Adolescent Psychiatry Outpatient Clinic received triple the standard amount of calls from parents requesting therapy appointments for their children. Between school closures, remote education and health care, and long delays for mental health services, there are fewer chances to identify children and families who may be in need of help, let alone the opportunities to actually address these needs.

In response to this need, David FitzGerald, Ph.D., Assistant Professor and Director of the Child and Adolescent Psychiatry Outpatient Clinic, designed a new program to meet the needs of parents and children experiencing elevated feelings of stress, anger, sadness, and anxiety. The Child & Family Development Program, offers several parent groups that each focus on a different goal for the parents, including ones that help parents manage child behavior problems, groups that improve parent-child emotion connections,

and support groups for parents of children with neurodevelopmental disorders, especially Autistic Spectrum Disorder. The program also offers free educational resources for parents to better inform themselves when it comes to behavioral issues and how to manage stress in themselves and their children.

In the future, this program will also expand its services. Currently, the program staff is working with school administrators to develop trainings and resources for school personnel in Southington in order to better support the mental health of students. The program will also be adding youth support groups. Much like the parent support groups, the youth support groups would provide a space for youth to connect with their peers and learn ways of dealing with feelings of anxiety or depression.

This innovative pilot program was funded with a \$150,000 proactive grant by the Bradley Henry Barnes and Leila Upson Barnes Memorial Trust at MSCF.

# Excellence, Integrity, Inclusiveness and **Transparency** in all we do.

## Strategic Plan: Building A Foundation

### Introduction

Main Street Community Foundation was founded in 1995 with the goal of supporting the Connecticut towns of Bristol, Burlington, Plainville, Plymouth, Southington, and Wolcott. The Foundation works closely with donors across the region to provide community members with opportunities to give back and support their community, and provides vital funding to nonprofit organizations providing services to local residents. MSCF has done just that for 27 years, but in that time the organization has grown tremendously and has become so much more. MSCF is this region's comprehensive center for philanthropy, leading the way in creating and supporting solutions to the communities' most pressing needs.

In January 2022, MSCF began the process of strategic planning, with the goal of articulating an updated vision and goals to guide its work in the coming years. Of particular importance in this planning process was hearing from donors, grantees, and community leaders across the service area, to ensure that MSCF is planning with these critical partners in mind.

The strategic plan for 2022-2027, approved by the MSCF Board of Directors in June 2022, identifies targeted priorities rather than addressing all of the Foundation's needs and activities. Much of the work we have done in the past will continue, but we believe the priorities identified here will strengthen our organization and ultimately our community.

# Strategic Plan (continued)

## What We Learned

Through surveys, interviews, review of secondary data and analysis of historic grantmaking, MSCF was able to formulate an analysis of the current state of the Foundation and questions necessary to plan for the future. Donor and grantee input has been an invaluable aspect of the Foundation's work since the beginning - no one knows the community more than the community. So it was only natural that the input from them provided a basis for the entire plan. MSCF learned a tremendous amount about the perceptions of the Foundation from its donors and grantees as follows:

- ▲ Over 95% of donors and grantees agreed or strongly agreed that MSCF is making a positive impact in the community.
- ▲ 93% of grantees strongly agreed that MSCF staff are friendly and approachable.
- ▲ 80% of grantees strongly agreed and 17% agreed that the granting process is straightforward and not burdensome.
- ▲ 92% of donors are interested or very interested in accessing a community needs assessment.

Opportunities identified through stakeholder interviews included:

- ▲ **Communications:** Ensuring grant and scholarship opportunities are consistently well-publicized as well as the need to communicate the breadth of MSCF's grantmaking areas. Providing resources to civic leaders so they can better support nonprofits in their communities to get connected to MSCF opportunities.
- ▲ **Grantee Support:** Grantees expressed a desire for more capacity building through micro-grants, as well as non-fiscal support including networking opportunities and proactive strategizing on needs and priorities.
- ▲ **Representation:** MSCF board and staff demographics reflecting the community particularly in regards to race, ethnicity, culture, experience and economic diversity.

## Community Needs and Priorities Assessment: Summary Findings

A review of census information analyzed by DataHaven, revealed that overall, the total service area population of MSCF has remained the same size over the past 10 years. The service area has become more racially and ethnically diverse though it is still significantly less diverse than the State of Connecticut as a whole. Within MSCF's service area, there are significant differences in the financial security of the various communities. This is particularly evident in the profile of Bristol where the median household income is lower than both the State and MSCF service area.

Bristol's poverty rate and food assistance is also higher than the rest of the service area, while the homeownership rate is lower. There are fairly large differences in educational attainment, particularly between Burlington and Southington, and the rest of the population. Bristol and Plymouth have evidence of lower levels of civic engagement than the rest of the service area.

Across the board, mental health was identified as a top priority as well as general quality of life issues. Mental health and workforce development, particularly in manufacturing and healthcare, were identified as being systemic issues that need to be supported through more grants in order to be secured for the long term.

## Mission, Vision of Impact for Our Community, and Core Values

**Our Mission, Vision, and Core Values statements** will guide the work of the Foundation for the coming years; they can be viewed throughout this Annual Report. The renewed Mission describes our work and the Foundation's unique role in the community. A new Vision of Impact for Our Community articulates the goals for our work. Our Core Values identify how we do our work.

## Strategic Goals 2022-2027

To realize our Vision for vibrant communities where people have equitable and inclusive opportunities to prosper, participate and be inspired to give, we have prioritized the following five goals:



### Strategic Planning Sub-Committee

Main Street Community Foundation engaged TDC to facilitate and execute this strategic planning process. However, the planning process was guided by those closest to the Foundation: a committee of board members and senior staff of MSCF. We thank them for their active and thoughtful participation, expertise, and time during this process.

Marguerite P. Fletcher, *Committee Chair*  
Jarre B. Betts, *Board Member*  
Scott F. Fournier, *Board Chair*  
William R. Micari, *Board Member*  
Jennifer O'Connor, *Board Member*  
Samantha Rajotte, *Scholarship & Program Officer at MSCF*  
Kathryn C. Reinhard, *Board Member*  
Susan D. Sadecki, *President & CEO of MSCF*  
John D. Scarritt, *Board Member*

For more information and details, visit [www.mainstreetfoundation.org/strategic-plan](http://www.mainstreetfoundation.org/strategic-plan).

# The Power of Donor Advised Funds

There are several kinds of funds that can be established at MSCF by community members, all of which have a specific impact on the needs in our communities. Donor advised funds allow donors to actively participate in grantmaking, recommending grants to charitable projects or organizations they want to support, with approval by the MSCF Board of Directors. These funds can have incredible power, and lead solutions in the community, sometimes providing larger investments in programs. More so, donor advised funds often allow for a deeper connection to be built between the donors and the causes they are supporting. The following are two examples of grants made from donor advised funds that led solutions in the community:



In 2022, the **Myra Boccardi Desroches Advancing Young Minds Fund** was established. This fund was established by Myra's family to honor her passion for children and literacy. The purpose of this fund is to award grants to organizations providing literacy services and resources needed to make literature more accessible to young minds. The Fund's advisors, Myra's husband Michael Desroches and Myra's sister Becky Boccardi Zappone, play an active role in deciding where the grants are awarded.

In its first year a \$2,000 grant was awarded from this Fund to the Early Childhood Collaborative of Southington (ECCS) for their Community Services' holiday gift program. The grant was recommended by Myra's family after MSCF staff conducted an assessment of local pre-K through 3rd grade

literacy needs. Coordinated during the winter season, the holiday gift program sees that all participating children, ages 12 and under, received a package of books specific to their reading level. In December of 2022, the Fund's advisors together with MSCF staff representatives attended the set up for the holiday gift program, where they assisted the ECCS staff and volunteers in creating the packages of books the children would receive. This was an opportunity for the Fund Advisors and ECCS staff to connect with each other; for ECCS to see the legacy they are continuing with the grant from this Fund, as well as for the Fund Advisors to see the impact of the grant.



The Walsh Summer Work Experience Program (WSWEP) began over a decade ago in order to serve students who did not qualify for the state-funded programming, and it is currently operated by the United Way of West Central Connecticut. Since 2017, Main Street Community Foundation has awarded grants from several funds to support the program and continue to provide this incredible opportunity to local students. 2022 was no exception, with over \$90,000 awarded from two funds - \$85,525 from the **Tim & Mary Walsh Charitable Fund**, a donor advised fund, and \$5,000 from the **Money in Motion Fund**, an unrestricted fund. Collaboration between donor advised funds and other funds at MSCF can be critical, and can enable the Foundation to have a larger investment in programs, such as WSWEP, and have a much greater impact.

Over the years, the majority of funding for WSWEP has been provided by a donor advised fund in partnership with other grants from MSCF as well as other funders like the City of Bristol, the McPhee Foundation and the Farmington Bank Community Foundation.

In the WSWEP, students spend the first week in a classroom with the aim of learning career readiness skills as well as social and emotional skills. The subsequent six weeks provide each student with real-world, paid work experience at local work sites around Bristol. The work sites afford a range of skills with the sites ranging from Bristol Hospital, Bristol Housing Authority, Shop Rite, the New England Carousel Museum and many others.

Throughout the years of this program, students have demonstrated their ability to succeed in these jobs, learn new skills, and exceed expectations of their employers. Often, students are hired by the worksites they attended after the program has ended. Programs like this are critical to developing confidence in the students and opening their eyes to different career opportunities, especially when other programs like this become unavailable.

## Collaboration – A Pathway to Solutions

There are so many services in the local communities that it can be difficult to keep track of everything available, for both residents and providers facilitating the programs. That is why collaborative initiatives are key to all communities.

MSCF staff sit on several local level committees, teams and task forces to help develop collaborative, proactive solutions to meet emerging needs in the six communities in an efficient way. While this can include funding through grant cycles, Foundation staff are also continually listening for emerging issues where a small responsive grant may be needed in a timely manner. Often programs of varying sizes are brought to our attention but the idea cannot wait for a competitive grant cycle and a full grant application is not feasible.

In addition, partnering with other funders and community leaders is a priority to formally strategize together on addressing community needs, especially in smaller communities where nonprofit resources are not as abundant. Recently MSCF has assisted in identifying funding sources to address COVID learning loss at a local elementary school, funded a debate

series to bring awareness to candidates running for public office and their positions, and funded the coordination of regular meetings of social service providers to address behavioral health needs in the region.

The power of collaboration, in various ways, was identified as a strength and continued opportunity in community and staff interviews during the Foundation's strategic planning process. Assisting in the facilitation of collaborative solutions is key to making the communities stronger.



**It is community needs like childhood literacy and youth workforce development that community members come to care about, and they are able to invest in these needs in a meaningful way through Main Street Community Foundation.**

## STEWARDSHIP OF ASSETS

The role of Main Street Community Foundation as a steward of permanent assets provides a unique service to the community. Each of the funds listed in this report was established by an individual, family, business or organization with a very specific purpose in mind. Safeguarding assets in perpetuity to honor donor intent is a responsibility the Foundation upholds every day. Administered prudently and thoughtfully, endowments will continue to provide a stable source of funding to projects, programs, and organizations in the Foundation's service area — forever. All financial policies instituted by the Foundation are cornerstones of that prudent stewardship.



For a full description of each named fund, visit [www.mainstreetfoundation.org](http://www.mainstreetfoundation.org).

# Funds

## DONOR ADVISED FUNDS

These funds allow donors to participate actively in grantmaking by making grant recommendations to the Foundation's Board of Directors.

Tom & Melanie Barnes Family Fund (2004)

Betts Family Fund (2017)

Myra Boccardi Desroches Advancing Young Minds Fund (2022)

Jay Bonetta Memorial Fund (2021)

The Broad View Fund (2016)

Bill & Janet Brownstein Charitable Fund (2015)

John Brozinski and Anne Povilaitis Pulmonary Rehabilitation Fund (2003)

Caiaze Family Charitable Fund (2013)

George & Maureen Carpenter Family Charitable Fund (2013)

Clement Family Fund (2010)

Paul and Joanne D'Aprile Family Fund (2022)

Denorfia Family Charitable Fund (2003)

Cheryl Dumont-Smith Community Fund (2007)

Pattie & Bill Dunn Family Charitable Fund (2011)

Fiondella Fund (2001)

Terry and Marguerite Fletcher Family Fund (2007)

Furey Family Charitable Fund (2005)

Greater Bristol Chamber of Commerce Fund (2000)

David Greenleaf Community Support Fund (2020)

Hamzy Family Charitable Fund (2010)

Sergeant Alex Hamzy Memorial Fund (2022)

Rafi Hamzy Memorial Fund (2021)

Ladies Power Lunch Fund (2020)

Pat & Morrie Laviero Family Charitable Fund (2015)

John & Sandra Leone Family Charitable Fund (2008)

Lorenson Fund (2020)

Manning/Sisson Memorial Fund (2021)

Muncy/Smith Family Fund (2007)

Nana Jane's Fund (2017)

Geoffrey M. Pierce Memorial Fund (2017)

Pyrzenski/Audette Family Fund (2020)

Sadecki/Ciechoski Family Charitable Fund (2022)

Stephen and Katherine Saman Memorial Fund (2015)

Smith Family Charitable Fund (2004)

Suchopar Family Charitable Fund (2021)

Technical Education Fund (2005)

Tim and Mary Walsh Charitable Fund (2011)

Pat & Bob Wollenberg Charitable Fund (2017)

Zomick Family Fund (2006)



## AGENCY ENDOWMENTS

These funds provide nonprofit organizations a full range of endowment management services.

American Clock & Watch Museum, Inc. Fund (1999)

Bread for Life Fund (2020)

Bristol Adult Resource Center Fund (2016)

Bristol Hospital Development Foundation Fund (1999)

Bristol Boys and Girls Club Fund (2004)

Burlington Historical Society Fund (2008)

Burlington Land Trust, Inc. Fund (2007)

Burlington Library Association Inc. Fund (1999)

Environmental Learning Centers of CT, Inc. Fund (1999)

St. Andrew Mission Endowment Fund (2009)

The Bristol Career Center of Tunxis Community College Endowment Fund (2001)

The Bristol Career Center of Tunxis Community College Endowment Fund II (2004)

Tunxis Community College Fund (2000)

Tunxis Community College II Fund (2004)

United Way of West Central Connecticut, Inc. Fund (1999)

Wheeler Clinic/Dennis Keenan Fund (1999)

## DESIGNATED AND PROJECT FUNDS

These funds provide donors the opportunity to designate support for a specific charitable organization or charitable project.

**Bradley Henry Barnes Fund for the Southington Community YMCA** (transferred in 2011) Southington Community YMCA

**Carlyle F. Barnes Memorial Chapel Fund** (transferred in 2007) Originally established in 1936, for the maintenance and upkeep of the Carlyle F. Barnes Memorial Chapel

**Hap Barnes Fund for Fire Safety and Prevention** (2002) Museum of Fire History in Bristol

**Hap Barnes Fire Safety Trailer Fund** (2012) To purchase and maintain a fire safety trailer to instruct children about fire safety

**Kai Alejandro Yagual Betts Memorial Fund** (2020) To support families through grants to nonprofit organizations providing services to family members who suffer from the effects of an unexpected or untimely death of an infant under the age of 2

**Bristol Health Fund for the Parent & Child Center** (2021) Parent & Child Center, a division of the City of Bristol Parks, Recreation, Youth and Community Services of Bristol, CT

**Bristol Libraries Fund** (transferred in 2014) For operating or capital expenditures to support the Bristol Public Library in Bristol and the F.N. Manross Memorial Library in Forestville

**Bristol Route 6 Flag Fund** (2022) For the purchase and maintenance of American flags flown in Bristol annually from Memorial Day through Veteran's Day

**Bristol Sports Hall of Fame Fund (BSHOF)** (2005) For the general purposes of BSHOF and scholarships for Bristol High School student athletes

**Bristol Yale Book Award Fund** (2021) To provide an annual Yale Book Award to a high school junior at each high school located in Bristol, Burlington, Plainville and Plymouth

**Julius D. Bristol Trust Fund** (transferred in 2007) Originally established in 1888, for the back-to-school needs of financially disadvantaged children, administered by Southington Community Services Department

**Mama Sandy Caggiano Fund** (2015) Family Resource Center at South Side School in Bristol

**Connecticut Quilt Registry Legacy Fund** (2002) Connecticut Quilt Project of the Connecticut Historical Society

**Corliss Fund for the Bristol Family Resource Centers** (2017) Bristol Family Resource Centers

**Early Learning - A PET Project Fund** (2018) Bristol Preschool Child Care Center, Inc. and Imagine Nation, A Museum Early Learning Center for general operating and program support

**Estela Wilderness Education Fund** (2012) Environmental Learning Centers of Connecticut (ELCCT) for camperships, program development, and trail maintenance

**Friends of Bristol Parks and Recreation Fund** (2013) Bristol Parks and Recreation Department for park enhancement projects

**Tyler James Gingery Memorial Fund** (2009) Hypertrophic Cardiomyopathy Association

**Samuel Goodsell Library Fund** (transferred in 2014) The acquisition and purchase of books, preferably nonfiction, for the Bristol Public Library

**Samuel Goodsell Park and Playground Fund** (2013) For the care, maintenance, improvement, acquisition, and extension of the parks and playgrounds in Bristol

**Haiti Medical Fund** (2017) Support for humanitarian efforts in Haiti to improve access to essential medical and surgical services and education to medical providers

**Immanuel Lutheran Alumni Tuition Assistance Fund** (2015) Immanuel Lutheran School in Bristol

**Edward Ingraham Fund** (2011) Boys & Girls Club of Bristol, to provide summer camp experiences for Bristol youth

**Inside Rebecca's Backpack Fund** (2006) Southington Community Services, for school supplies, summer school, or other educational opportunities

**Charlotte Kall Fund for Bristol Adult Resource Center** (2022) Bristol Adult Resource Center, to support BARC's residential services with preference for social and recreational programs including music enrichment activities

**Kristen's Kause Fund** (2015) Southington-Cheshire Community YMCAs, for a community-wide fire safety education program which includes information specific to the dangers of fireworks

**Kristen's Wishes Fund** (2007) Southington Community Services, "Wishes" for Youth

**Charles Kushlan Memorial Fund** (transferred in 2006) Boys & Girls Club of Bristol Youth of the Year Award

**Ercole and Pamela Labadia Fund for the Boys & Girls Club** (2017) Boys & Girls Club of Bristol, to support the Cambridge Park Clubhouse

**Manross Memorial Library Fund** (transferred in 2014) For operating or capital expenditures to support the F.N. Manross Memorial Library in Forestville

**Frederick T. Manross Trust** (transferred in 2020) Bristol Hospital and the F.N. Manross Memorial Library in Forestville

**Bob and Carol Messier Family Fund** (2008) Bristol Business Education Foundation mini-grant program

**Sarah Norton Pardee Fund** (2021) City of Bristol Cemetery Commission for the maintenance, repair and restoration of monuments, headstones, and grave markers of historical or architectural significance to the community of Bristol, CT

**Nutmeg Symphony Orchestra Educational Activities Fund** (2018) Nutmeg Symphony Orchestra, to support educational programs and musical activities

**Jacob Perkins Memorial Fund** (2020) Southington Police Department, to benefit the Southington Police K-9 Unit

**Plainville Affordable Housing Corporation Fund** (2000) Town of Plainville, to assist with housing for low and moderate income people within the town of Plainville

**Plymouth Library Association Inc. Fund** (1999) Plymouth Historical Society, to maintain the Plymouth Library Room, which houses many collections and preserves historical documents that were located at the Plymouth Library

**Eva M. Pierce Memorial Charitable Fund** (2008) Meals for the Needy, Meals on Wheels, St. Vincent DePaul Society of Bristol, the Prudence Crandall Center and The Cancer Center at Bristol Hospital

**Jill Lynne Shackett Leadership & Learning Award Fund** (2022) South Side School, to provide awards to fifth graders moving up to middle school to assist with the transition

**Sky Bight Foundation Fund for the Bristol Boys & Girls Club** (2011) Endowment for the Boys & Girls Club of Bristol facility, which opened in October 2014

**Southington PRIDE Fund** (retired in 2023) Southington PRIDE, to advocate for awareness and education on behalf of the LGBTQIA+ community and their allies

**Pat & Bob Wollenberg Fund for Bristol Adult Resource Center** (2018) Bristol Adult Resource Center, to support capital projects and repairs

**Pat & Bob Wollenberg Fund for Opportunity House** (2018) Opportunity House, Inc. of Hamden, CT to support the employee appreciation program

## FIELD OF INTEREST FUNDS

These funds allow donors to support a broad category of need such as the arts, healthcare, education, environment or a geographic area. Grant recipients are selected by the Foundation's Distribution Committee.

**Bradley Henry Barnes and Leila Upson Barnes Memorial Trust** (transferred in 2004) To support the health and well-being of Southington residents

**Fuller and Myrtle Barnes Fund for Education** (1998) To provide special educational programs and opportunities for teachers and students in the pre-school to 12th grade populations

**Becker Family Fund** (1996) For healthcare, education and social action

**Sid Bernard & Ed Miller Children's Fund for the Visual Arts** (2013) To support programs and projects teaching innovative or traditional art education skills to students

**Donna Borysewicz Fund for Women** (2015) To advance initiatives identified by the Women & Girls Immediate Response Fund of the Foundation

**Bristol Board of Education Immediate Response Fund** (2005) To provide immediate response grants for the children, families and employees of the Bristol School system in need of assistance

**Bristol Talks Teal Fund** (2013) To raise awareness of ovarian cancer and its symptoms, and to assist individuals who suffer from ovarian cancer and may qualify for medical assistance they cannot provide for themselves

**Burlington Community Fund** (2011) For charitable projects and programs that will enhance the quality of life for the citizens of Burlington

**Calvanese Foundation Green & White Fund for Behavioral Health** (2013) To provide support to adults and children residing in Southington who are in need of mental health and/or substance abuse treatment services by providing mental health screening, access to care, and education

**Ciccarelli-Vitale Community Advancement Fund** (2001) For distribution in the fields of education and the environment; to provide assistance to Bristol residents acutely in need

**Dan Cistulli Memorial Music Fund** (2004) Funding for lessons and/or instruments to young people in Bristol who may need financial assistance

**John & Gloria DiFrancesco Fund for Women and Girls** (2011) To advance initiatives identified by the Women & Girls Fund of the Foundation

**Karen DuCotey Fund for Kids** (2011) For students in Region School District #10 in need of immediate assistance due to a particular life situation or unexpected financial hardship

**Barbara Hackman Franklin Fund for Women** (2011) To support initiatives identified by the Women & Girls Fund of the Foundation

**Margaret Haberman Memorial Fund for Music** (2010) For the promotion and appreciation of music in the communities served by the Foundation

**Jaspersohn Family Memorial Fund** (2001) To support programs and organizations which provide humanitarian efforts to the greater Bristol area

**KAWFY Memorial Fund** (2019) To support programs and projects that will benefit the community of Southington

**Hal Kilby Athletics Fund** (2016) To support community athletic needs in Bristol

**Paige Wartonick Laferriere Memorial Fund** (2001) To support programs and organizations with preference to health care, education and social action

**Leading Ladies Immediate Response Fund** (2010) For immediate response grants to women and girls in Southington with emphasis on basic needs, health, safety, education, and employment opportunities

**Main Street Children's Fund** (2006) To provide immediate response grants to address the basic needs of children under the age of 18, or to promote the general well-being of area youth

**Make A Mark Region 10 Enrichment Fund** (2009) To advance special and creative initiatives to benefit the students who attend public schools in Burlington and Harwinton

**Malerbo Childrens Field Maintenance Fund** (2005) To provide grants for field maintenance, field improvement, facility improvements or related equipment to nonprofit organizations in Burlington and Bristol that provide organized youth sports activities

**Elizabeth I. and Louis J. Matt Animal Protection Fund** (2006) To provide for the care and support of animals in need in the state of CT

**Lynda M. Mazur and Michael F. Colomonic Jr. Hands-On Fund** (2018) To support non-sport, noncompetitive programs and activities for school-age children living in or attending school in Southington

**Men & Boys' Fund** (2016) To make it possible for men and boys to improve the quality of their lives, increase self-sufficiency and make a positive difference in their community.

**Men & Boys' Immediate Response Fund** (2017) To provide immediate assistance for basic needs and opportunities for men and boys of all ages

**Merriman Family Fund** (2000) To promote environmental and ecological preservation, conservation, education, research and advocacy

**Laura Schlesinger Minor Fund** (2017) To support initiatives identified by the Women & Girls Fund of the Foundation

**James R. Parker Trust** (transferred in 2002) To meet the needs of residents of the town of Burlington

**Plainville Community Fund** (2006) To provide funding for charitable projects and programs that will enhance the quality of life for Plainville citizens

**Plainville Housing Assistance Fund** (2019) To support income-eligible Plainville residents in need of assistance to secure affordable housing

**Plymouth Century Club Fund** (2006) To provide mini-grants to Plymouth's teachers and other school personnel for creative and innovative instructional practices

**Douglas and Noreen Schumann Special Interest Fund** (1998) To support community programs focused on building self-esteem, confidence and strong values in young people

**Jean Sorey Fund for Single Parent Families** (2015) To provide support to single parents for immediate needs to better their families

**Southington Arts Council Legacy Fund** (2018) To provide grants for the promotion and appreciation of artistic and cultural opportunities to benefit Southington residents

**Jay and Elizabeth Tyrrell Fund for the Arts** (2011) To advance artistic and cultural opportunities in the greater Bristol area

**Werner Family Fund** (2000) To provide immediate assistance for basic needs and opportunities for inclusion to families with children facing financial hardship

**Women & Girls Fund** (2001) To support programs which improve the conditions and opportunities for females in the towns served by the Foundation

**Women & Girls Immediate Response Fund** (2002) To provide immediate assistance for basic needs and opportunities for women and girls of all ages

## SCHOLARSHIP FUNDS

These funds enable a donor to establish a named fund for any level of education. Donors may designate a particular school, field of study and select eligibility criteria.



- 4 Burns Scholarship/St. Joseph/St. Paul Fund (2000)
- Academic Achievement Award (2015)
- Christian Arndt Scholarship Fund (2006)
- E. Bartlett Barnes Award of Journalism Fund (1999)
- Stanley P. Bitel Memorial Fund (2015)
- Sylvia Bodak Memorial Scholarship Fund (2001)
- Peter and Marjorie Bossi Educational Fund (2003)
- Bowerman Scholarship Fund (2008)
- Bristol Boys & Girls Club Schulman Fund (2000)
- Bristol Lions Club/James J. Keating Scholarship Fund (2022)
- Bristol Lions Club F. Fred Soliani Memorial Scholarship Fund (2008)
- Bristol Police Scholarship Fund (1999)
- Bristol Yale Club Scholarship Fund (1999)
- Bristol Yale/Miles Peck Jennings Memorial Scholarship Fund (2021)
- Burlington Lions Charities Scholarship Fund (2000)
- Ron Burns Community Leadership Scholarship Fund (2020)
- Alicia M. Butler Memorial Scholarship Fund (2021)
- Evan J. Chyun Memorial Scholarship Fund (2022)
- Conn Acoustics Scholarship Fund (2006)
- Peg Coughlin Nursing Scholarship Fund (2000)
- Rit Croce Academic and Vocational Scholarship Fund (2014)
- Richard A. DellaVecchia Scholarship Fund (transferred in 2002)
- Katherine Dobroczyński Memorial Scholarship Fund (2014)
- Jeffrey Downes Memorial Scholarship Fund for the Trades (2015)
- Karen Finder Scholarship Fund (2003)
- Carolyn Fisher Scholarship Fund (transferred in 2004)
- Olivia Fusco Memorial Art Scholarship Fund (2016)
- Joann Galati Scholarship Fund for Education (2019)
- GE's Industrial Solutions Scholarship Fund (2015)
- Andrew and Murielle Giacomini Scholarship Fund (2003)
- Jake Gilbert Memorial Culinary Arts Scholarship Fund (2022)
- Azilda Hebert Music Scholarship Fund (2000)
- Grace & Norma Joy Scholarship Fund (2008)
- John Kalinoski Scholarship Fund (transferred in 2004)
- Kalt Moreau Family Scholarship Fund for Education (2018)
- KAWFY Memorial Scholarship Fund (2019)
- Keating-Monaghan Memorial Scholarship Fund (2008)
- Lena M. and Peter L. Korotie Scholarship Fund (1997)
- Vincent T. Kozyrski Scholarship Fund (2010)
- Sean Landry Memorial Basketball Scholarship Fund (2008)
- Julie Larese Bristol Tramps Scholarship Fund (2022)
- Ray Machine Corp./Ray & Darlene Lassy Family Fund (2017)
- John J. and Doris Lazorik Memorial Scholarship Fund (1997)
- Leger Initiative for Education Fund (L.I.F.E.) (2005)
- Dave Lepore Journalism Scholarship Fund (2003)
- Thérèse MacCallum "Great Kid" Scholarship Fund (2005)
- Nicholas P. Maglio ACE Fund (2011)
- Main Street Community Foundation Scholarship Fund (1997)
- Malerbo Memorial Scholarship Fund (2005)
- Maskery Family Scholarship Fund (2018)
- Elizabeth I. & Louis J. Matt Medical Scholarship Fund (2007)
- Robert E. and Angeline P. McCormack Scholarship Fund (2002)
- McMaster-Moulthrop Scholarship Fund (1999)
- Ken E. Micloskey/Dorothy Micloskey Ives Award Fund (2002)
- Dave Mongillo Memorial/Golf Scholarship Fund (2018)
- Al and Joan Monico Scholarship Fund (2013)
- NESMA Scholarship Fund (2010)
- AJR Nocera Memorial Fund (2007)
- Anthony Norton Scholarship Fund (2015)
- Scott W. Organ Student-Athletic Scholarship Fund (2000)
- C. Henry Ozga Memorial Scholarship Fund (2021)
- Ralph Papazian Memorial Scholarship Fund (2013)
- Estelle Delano Peterson Scholarship Fund (2004)
- Dorothy Dewey Picard Music Scholarship Fund (1999)
- Plymouth Community Club Scholarship Fund (transferred in 2003)
- Alice C. Pulsifer Memorial Scholarship Fund (transferred in 1997)
- Max and Ruth Rabin Scholarship Fund (2006)
- Radcliff Family Education Fund (2002)
- Radcliff Plainville High School Fund (2006)
- Louis J. Rascoe Scholarship Fund (2005)
- Julie A. Roche Nursing Scholarship Fund (2014)
- Douglas Roland Aid for the Trades Scholarship Fund (2009)
- Clement J. Roy Scholarship Fund (2012)
- Saint Matthew School Scholarship Fund (2000)
- Lawrence (Larry) Scelza Memorial Scholarship Fund (2010)
- Dora Schubert Scholarship Fund (transferred in 2017)
- Glo Sessions Fund for Art Education (2012)
- Jill Lynne Shackett Educational Scholarship Fund (2013)
- The Southington Observer/Step Saver Scholarship Fund (2005)
- Swicklas Family Scholarship Fund (2022)
- Jay W. & Elizabeth M. Tyrrell Scholarship Fund (2011)
- Louise (Humphrey) Van Gorder Music Camp Scholarship Fund (2014)
- Dr. Joan T. Wallace Prize for Highest Achievement in English at Southington High School (2014)
- John & Peggy Walsh Memorial Scholarship Fund (2011)
- Kristen Warner Scholarship Fund (2004)
- John Whitcomb Scholarship Fund (2001)
- Reverend Dr. Eddie C. Whitehead of Bristol, CT - Reverend Dr. Martin Luther King Jr. Scholarship Fund (2021)
- Eva Brodowicz Wickwire Volunteer Scholarship Fund (2015)
- Pat & Bob Wollenberg Scholarship Fund for Special Education (2018)
- Yarde Metals Memorial Scholarship Fund (2005)
- The Craig Yarde Scholarship Fund (2022)

## UNRESTRICTED COMMUNITY FUNDS

These funds are flexible and responsive to emerging and changing community needs. The Foundation distributes grants from these funds where they are needed most.

Wally Barnes Fund for Community Leadership Initiatives (2013)

Bristol Brass General Grant Fund (1998)

Bristol Savings Bank Fund (1996)

Angela and Al Caruso Family Charitable Fund (2006)

Ronald F. and Emilie P. Duhaime Family Fund (2003)

Dumont Family Charitable Fund (2000)

Formagioni-Lodovico Family Fund (2009)

Jim & Eleanor Frawley Community Fund (2010)

Gnazzo/Reidy Charitable Fund (2000)

Main Street Community Foundation Memorial Fund (2008)

JoAnn & David Mills Family Fund (2013)

Edward W. and Audrey K. Mink Memorial Fund (2000)

Money in Motion Fund (2015)

Karen and Kim Murphy Family Charitable Fund (2016)

Tedesco-Gallant Charitable Fund (2005)

Turkus Family Fund (2000)

Pat & Bob Wollenberg Family Fund for the Community (2018)



## SUSTAINABILITY FUNDS

Sustainability Funds strengthen the Foundation's role as a funder, community leader, convener and advocate.

Barnes Group Inc. 150th Anniversary Fund (2007)

Main Street Community Foundation Endowment Fund (2000)

Dave and Edith Scarritt Fund (2004)

Yarde Metals Community Support Fund (2005)



## Burlington Community Fund

In 2011, the late Bob Merriman, a longtime Burlington resident, founded what was originally called the Burlington Bell Community Fund, but what is now known as the Burlington Community Fund. Merriman, together with a group of committed community leaders, established this Fund as an endowed fund meant to exist as a permanent source of funding for the support of charitable projects and programs enhancing the lives of Burlington residents.

The Fund was originally named the Burlington Bell Community Fund after the bell that still serves as the symbol of the Fund. The bell belonged to the late Bob Merriman after it was cast in bronze in Cincinnati, Ohio in 1885; it spent many years in Louisiana, and was then bought by Bob for \$300 in 1941, bringing it home after the war. His father mounted it on the roof of their 1812 home at the top of Black Walnut Lane in Burlington and was with the Merriman family for 70 years. It now resides in a display case at Town Hall. With its donation to the Town Hall, the bell still stands as a symbol for the fund, calling the community to action to help those in need.

Since its establishment, MSCF has awarded over \$45,000 in grants from the Burlington Community Fund to improve the lives of Burlington residents. Grants made in 2022 totaled \$5,000 and were awarded to three local organizations. The Burlington Historical Society was awarded \$750 for the restoration of three spinning wheels to be used for educational programs and demonstrations; Imagine Nation, A Museum Early Learning Center received a grant of \$1,750 for the Imagine Nation Loves Burlington program, providing S.T.E.A.M. educational workshops and individual activity kits in the Burlington community; and lastly the New Britain Museum of American Art is continuing their Access to the Arts program for Regional School District #10 students attending Har-Bur Middle School with a grant of \$2,500.

Because of the establishment of this fund twelve years ago and the dedication of many, the Burlington Community Fund continues to enhance the quality of life in the community and add to the experiences Burlington residents can enjoy.

### 2022 Burlington Community Fund Distribution Committee

Sandy Hierl  
Colleen Magnus  
Ann Mazeau  
Jacky Quinn  
Paul Rochford  
Janet Schwartz  
Jonathan Schwartz



## Men & Boys' Fund

The Men & Boys' Fund celebrated a delayed 5th anniversary in June 2022. The Anniversary Celebration breakfast event was held at the DoubleTree by Hilton Hotel Bristol and invited community members, grantees, donors, and volunteers to celebrate the accomplishments of the Fund since its establishment in 2016. The event featured two guest speakers: local author, TV host and community leader Eric Clemons; and Vanessa L. Dorantes, LMSW, Commissioner, CT Department of Children and Families. Both speakers spoke passionately about their own experiences and the specific needs and challenges men and boys face in our communities while inspiring and motivating everyone in attendance.

Following the anniversary event, an anonymous donor provided a fundraising challenge to the Men & Boys' Fund to further build the endowment. The donor pledged to match every dollar donated between the date of the anniversary event and September 30, 2022, up to \$5,000. The goal was not only met, but it was ultimately exceeded. A total of \$7,580 was raised to benefit the Fund thanks to the generous community members who contributed. Growing the endowment in this way ensures that support for local men and boys will not only continue but grow forever.

The organizations and programs MSCF is able to support through the Men & Boys' Fund make it possible for men and boys to improve the quality of their lives, increase self-sufficiency and make positive differences in their communities. In 2022, \$11,000 in program grants were awarded from the Fund to seven organizations, and \$552 was awarded in immediate response grants. Since its establishment, MSCF has awarded a total of \$47,666 from the Fund in both program and immediate response grants. With everyone involved working together, the Men & Boys' Fund has and will continue to grow in capacity and impact.

### 2022 Men & Boys' Fund Advisory Board

Rich Carmelich, Chair  
Dave Rackliffe, Vice Chair  
Rob Sanderford, Secretary  
Rodger Stotz, Treasurer  
Chris Amorosino  
Michael Audette  
Larry Covino  
Derek Jones  
Steve LePage  
Mark Zammatt







## Plainville Community Fund

In 2006, a group of community leaders in Plainville came together with the goal of enhancing the quality of life for Plainville residents. To meet that goal, a community endowment was established at Main Street Community Foundation - the Plainville Community Fund. The Fund created a permanent resource of assets for charitable programs and projects that benefit the town; every dollar donated and granted through the Fund benefits local nonprofits that serve the residents of Plainville.

MSCF awarded \$12,000 from the Plainville Community Fund to seven nonprofit organizations that are engaged in a wide variety of programs. A \$2,300 grant was awarded to PARC, Inc, a nonprofit that has been providing support services to people with developmental disabilities for 65 years, to fund their Adult Life Skills program, which focuses on developing skills for independent living. The Pequabuck River Watershed Association received a \$1,700 grant for their Civil Engineering Tour for Plainville High School students enrolled in the UConn Environmental Science Early College Experience. Meanwhile, the Louis Toffolon Elementary School was awarded a \$1,500 grant in order to extend both growing season and learning opportunities through students and staff building a cold frame/greenhouse. All grants distributed from the Plainville Community Fund can be found on page 13.

In order to stay informed of emerging town needs and to assure the grants being awarded make the biggest impact, the Plainville Community Fund has a group of volunteers that serve on the Advisory Council. The Advisory Council is comprised of dedicated Plainville residents who represent many industries, careers, and life experiences; they review grant applications and provide their funding recommendations to the Foundation's Board of Directors.

Main Street Community Foundation is so grateful to these volunteers that take the time to bring their ideas, talents, spirit, and dedication to improving their community and the lives of Plainville residents.

### 2022 Plainville Community Fund Advisory Council

William Petit, Jr, Chair  
 Andrea Wasley, Vice Chair  
 Carol Stauble, Secretary  
 Ashley Mroz, Treasurer  
 Helen Bergenty  
 Simonne Corriveau  
 Mary Couture  
 Lynn Davis  
 Val Dumais

Deanna Gelt  
 Ken Gnazzo  
 Robert Lee  
 Lana Manafort  
 Kelly Perrotti  
 William Petit, Sr.  
 Robyn Poulos  
 Jo Rosinski  
 Jim Welch



## Women & Girls Fund

While the Women & Girls Fund (WGF) continues to grow and evolve, the one thing that will never change is the deeply held belief in the potential and power of women and girls. Main Street Community Foundation is committed to this belief through grants awarded from the Women & Girls Fund to local organizations.

Since the Fund's establishment in 2001, over \$718,000 in grants have been awarded from the Women & Girls Fund to support organizations and programs that improve the lives of women and girls. Just in 2022, \$43,400 was awarded in the WGF's annual competitive grant cycle and \$6,960 in Immediate Response grants. Like every year, the grantees focused on a range of community needs that affect local women and girls across all demographics. Girl Scouts of Connecticut was awarded a grant to establish three new troops; PARC received a grant for the Aging with Disabilities program for senior women in Plainville; Shepard Meadows Equestrian Center was awarded a grant for their Mothers and Daughters Equine Assisted workshop series; and Prudence Crandall Center received a grant to support their program that provides emergency shelter for victims of domestic violence. A list of all grant awards can be found on page 14.

Adding to the Fund's affect on the local communities is the annual Wonder of Women (WOW) event. The May 3, 2022, WOW event was held at the Aqua Turf in Southington to celebrate and honor the success and impact of the Fund, while raising money for that year's grants. In addition to welcoming 400 guests to the event, Ayodele Casel, a nationally recognized tap dancer and choreographer, was the night's keynote speaker.

For the past several years, the WOW event also features an additional opportunity to donate called Pass the Purse. On each table a small purse is placed and attendees are encouraged to put donations inside of it and then "pass the purse." Prompted by the war in Ukraine, the 2022 donations were granted to the Polish American Foundation of Connecticut, an organization that has volunteers in Poland working in support of women and children who have fled Ukraine and are settling in Poland. The Pass the Purse donations by the end of the event totaled over \$5,100.

Whether it is supporting a local Girl Scout Troop or creating socialization opportunities for senior women with disabilities, MSCF is committed to improving the lives of women and girls through the Women & Girls Fund. This would not be possible without the generosity and commitment of many donors, volunteers, and supporters throughout the region.

### 2022 Women & Girls Fund Advisory Board

Jessica Pieri, Chair  
 Susan Winn, Vice Chair  
 Susan Moreau, Secretary  
 Catherine Cassin, Past Chair  
 Jarre B. Betts, Member-at-Large  
 Jeanine Audette  
 Lori Gottschall  
 Margo Lachowicz

Sarah Lucian  
 Morgan Murphy  
 Colleen Nicastro  
 Lisa Palen  
 Julie Rebelo  
 Sharon Stotz  
 Carolyn Ziogas



## Bradley Henry Barnes & Leila Upson Barnes Memorial Trust



Established in 1973, the Bradley Henry Barnes and Leila Upson Barnes Memorial Trust was transferred to Main Street Community Foundation in 2004. The Trust distributes grants to organizations with programs that improve the health and wellbeing of the Southington community, and has awarded \$12.3 million since its transfer to MSCF.

The long history of these grants awarded by the Trust continued in 2022 with 18 grants to organizations serving Southington residents. One of which, detailed further on page 21, was a \$150,000 grant to UConn Health for their Child and Family Development program. The program's successful launch was celebrated in January 2023 with a reception attended by local Southington officials and clinicians at UConn Health Southington. There, David P. FitzGerald, Ph.D., Assistant Professor and Director of the program, discussed the program's goals and future.

There are many other community needs that the Trust is able to contribute to, one of which

is supporting older and/or physically disabled residents of Southington. UR Community Cares, Inc. received a \$5,000 grant to establish a pilot program in Southington where volunteers help residents live safely at home and maintain their quality of life. Residents who can benefit from this program include anyone 70 years or older or those with physical disabilities, regardless of age. After enrolling online, participants then request assistance with things such as housework, yard work, transportation and companionship visits; volunteers connect with them on a first-come, first-serve basis. Services like this are crucial to the Southington community, as 15 percent of the town's population is 70 or older.

On the opposite end of the age spectrum, the Trust awarded the Early Childhood Collaborative of Southington a \$25,000 grant. This organization is lead by a group of committed educators, parents, grandparents, healthcare and childcare providers, business owners, and members of the community who are deeply dedicated to the success of children in Southington. This grant was awarded

specifically to expand the organization's work to educate caregivers of Southington's youngest children through workshops and educational programs. To see all grants awarded from the Bradley Henry Barnes and Leila Upson Barnes Memorial Trust, see page 12.

### 2022 Bradley Henry Barnes & Leila Upson Barnes Memorial Trust Advisory Committee

Mary Ellen Hobson, Chair  
 Sherwood Anderson  
 Susan Gagnon Ondusko  
 Pamela Higgins  
 Janis L. Neri  
 Kathryn C. Reinhard  
 John D. Scarritt  
 George Skarvinko  
 Barry Thompson  
 Scott F. Fournier, ex officio  
 Susan D. Sadecki, ex officio



## FRIENDS OF THE FOUNDATION

We gratefully acknowledge the Friends of Main Street listed on this page who generously supported our 2022 annual Friends Appeal. This annual campaign, overseen by past board member and founder Tom Barnes, provides necessary administrative financial support to advance the charitable activities of the Foundation to better serve your communities.

We want to take this opportunity to sincerely thank the many campaign donors and volunteers. Without your gifts in 2022, we would not have been able to respond to your communities' most pressing needs and help create the vibrant communities we all call home.

In appreciation, a donor and friends reception is held annually to honor and thank the Foundation's donors and volunteers. Held at the Environmental Learning Centers of Connecticut's Indian Rock Nature Preserve in Bristol, over 100 Friends attended the outdoor reception,

enjoying the property, the company, music by Cyndi Simms, great food and of course the famous ice cream bar.

Special appreciation to Dawn Nielsen for designing the invitation and Garrett Printing & Graphics for their donation of printing. Sincere gratitude to our hosts at ELCCT for their hospitality.

Your support truly makes a difference. Thank you for your partnership in helping to fulfill the Foundation's mission.



### PARTNER IN PHILANTHROPY (\$2,500+)

Barnes Group Foundation, Inc.  
 Harry F. Barnes & Carol H. Barnes  
 Family Foundation  
 Thomas and Melanie Barnes  
 Jeanne Radcliff  
 Sky Bight Foundation, Inc.

### COMMUNITY INVESTOR (\$1,000-\$2,499)

Jarre and Whit Betts  
 Robert and Rebecca Caiaze  
 Dennis Crispino  
 D'Amato Construction Company, Inc.  
 Marguerite Fletcher  
 Charles and Rosamond Glendon  
 Edward and Carole McPhee  
 William Micari  
 Janis Neri  
 John and Susan Scarritt

### LEGACY BUILDER (\$500-\$999)

Sherwood and Kate Anderson  
 Lisa Attle  
 Bank of America Private Bank  
 Kenneth and Mary Benoit  
 Leonide and Irene Charette  
 Dennis and Eileen Cleary  
 Scott and Karen Fournier  
 Arthur and Lillian Funk  
 Gibbs Wire & Steel Co., Inc.  
 M.R. Home Care  
 Townsend Mink  
 New England Spring & Metalstamping  
 Association  
 Jennifer and Tim O'Connor  
 Kathryn and Edward Reinhard  
 Ezra Ripple  
 The Arthur G. Russel Co. Inc.  
 Susan and Ronald Sadecki  
 John-David Scarritt  
 Andrea Wasley

### AMBASSADOR (\$250-\$499)

Michael and Eileen Adams  
 Stephen Allaire and Mary Ruth Connolly  
 Mark and Nancy Blum  
 Victoria Biondi  
 Nancy Brault  
 Richard Caporaso  
 Cheryl Dumont-Smith and Edward Smith  
 Country Manor Realty, Inc.  
 Daniel and Sally Daigle  
 Delfino Property Management, LLC  
 Melanie Dumont  
 Patricia and William Dunn  
 Richard and Sue Dziura  
 Family Roots Produce Market  
 Robert and Carolyn Fiondella  
 Funk Funeral Home  
 Timothy Gamache  
 Mary Ellen Hobson  
 Harold Kilby  
 Paula and Richard Knight

Michael Lambert  
 Christopher and Leah LaPlaca  
 Edward and Laura Lorenson  
 Mark Malley  
 Masotti Electric, LLC  
 Susan and Mark Moreau  
 Mark and Kim Moriarty  
 Kim Murphy  
 Thomas and Marie O'Brien  
 Radiologic Associates, PC  
 Riverside Investment Services LLC  
 John and Mary Smith  
 Southington Tool & Manufacturing Corp.  
 Rebecca and Marc Zappone

*continued on next page*

### COMMUNITY CHAMPION (\$100-\$249)

Anonymous  
Anonymous 2  
Anonymous 3  
Anonymous 4  
Anonymous 5  
ACG North America  
Megan and Michael Albanese  
Denise and James Albert  
David and Kristen Aldieri  
Allread Products LLC  
Barr, Nicklis, Gorski & Co., PC  
Kurt and Jean Barwis  
Patricia and William Bayne  
Kyle and Emily Biddick  
Annie Bonetta  
Gary Boukus  
Marie and Kenneth Bowes  
Bradley, Foster & Sargent, Inc.  
Bristol Recovery Club Inc.  
Peter and Trudy Brown  
Patricia Chapman  
Armann Ciccarelli and Valerie Vitale  
Raymond and Dorothy Ciechoski  
City Hardware, Inc.  
Sondra and Anton Clement  
Connecticut Lighting Center, Inc.  
Richard and Elaine Couture  
Crescent Manufacturing Operating Co.  
Jeffrey Curtis  
David DeCroce  
Barbara and Timothy Denehy  
Valerie DePaolo and Michele Boisvert  
Joseph and Amy DiFazio  
Maria and Andre Dorval

Susan and Val Dumais  
Cary Dupont  
Michael and Margaret Eastham  
Diane and James Eitvydas  
Karen Finder  
Lorraine and Marv Friedman  
Timothy and Valerie Furey  
Mary Lynn and Gary Gagnon  
Joann Galati  
Donald and Margaret Goranson  
Arlene Grandbois  
John and Barbara Greenlaw  
Hamzy Law Firm, LLC  
Kenneth Hintz  
Kimberly James  
Dennis and Mary Keenan  
Kathleen and Kevin Kerchaert  
Lisa and David King  
Leslie Kish  
Edward Krawiecki  
Pamela and Ercole Labadia  
Thomas LaPorte  
Steven and Donna Lasewicz  
Louise Lauretano DeMars  
Dawn Leger  
John and Sandra Leone  
Kelly and Brian Leppard  
Anthony and Judith Lodovico  
Diane and Raymond Macklosky  
Lexie Mangum  
Julie and Patrick Matthews  
Robert and Carol Messier  
Craig and Laura Minor  
Frances Nadeau  
Elliot and Patricia Nelson

Dawn and Eric Nielsen  
Susan and Richard O'Brien  
Sally and Terry O'Connor  
Catherine and James O'Hara  
Lisa Palen  
Sebastian and Karolina Panioto  
Patricia and Joseph Philippon  
Rhonda and John Pilkington  
Julie and Caleb Portfolio  
Deborah and Marino Prozzo  
James and Ann Pryor  
Jeanne and Gary Roberge  
Paul and Jodi Rochford  
Rachel and Jay Sattler  
Elizabeth and James Scarritt  
Jonathan and Janet Schwartz  
Scott Funeral Home, Inc.  
Susan and Francis Scully  
Carl and Sharon Sellberg  
Lee Sinkwich and Claudette Ferrante  
Daniel and Jessie Smiley  
Murdo and Patricia Smith  
Sara Sonne  
Michael Sweeney  
Rodger and Sharon Stotz  
Terry Enterprises, LLC  
Jane Theriault  
Barry Thompson and Therese Pac  
Torrington Savings Bank  
William and Kim Tracy  
Katherine and Gary Weed  
Alfred Wilhelm  
Christopher Wright  
Stephanie and David Zomick

### FRIEND (UP TO \$100)

Richard and Barbara Alden  
Patricia Andrews  
Doris Bouvier  
Nancy and John Chiero  
Michael Dube and Karen Samul  
Marilyn Fetzer  
Mary Kay Greger  
Wilma and Dennis Hart  
Maryellen Holden  
Robert and Patricia Kalat  
Kim and Richard Larkin  
Morris and Patricia Laviero  
Lawrence and Eileen Linnetz  
Bonnie and John Lodovico  
Maria Teresa and William Lombardi  
Sarah Lucian  
Angeline McCormack  
Jacqueline and David Merchant  
Susan Moore  
The Neubauer Building LLC  
Karen Pescarmona  
Mary-Alice Petrucelli-Timek  
Jerald and Carroll Rafaniello  
Maryann Seleman  
Maureen Sonstrom  
Elaine and Matthew Sportelli  
William and Angela Stortz  
Marian Whitcomb  
Marcia White  
Mark and Lorna Zammatt



## Reasons to Give To and Through MSCF

- ▲ Broad Expertise on Community Issues and Needs
- ▲ Community Leadership
- ▲ Tax Advantages
- ▲ Expertise in Managing & Investing Funds
- ▲ Trust & Accountability
- ▲ Keep Your Giving Local
- ▲ Support Diverse, Equitable and Inclusive Initiatives
- ▲ Honor or Memorialize Your Loved One
- ▲ Leave A Legacy

# Gifts Received in 2022

We gratefully acknowledge our many generous donors and thank them for their gifts during the 2022 calendar year. If we have inadvertently failed to note your contribution, please let us know so that we may acknowledge it in a future publication.



## A

Anonymous  
ACG North America  
Robin and Joseph Adamo  
Michael and Eileen Adams  
Adams Family Charitable Fund at Schwab Charitable  
Cathryn Addy  
Wesley Agee  
Roger and Gloria Ahlstrom  
Megan and Mike Albanese  
Denise and Jim Albert  
Maura Albert  
Barbara and Dick Alden  
Dave and Kristen Aldieri  
MaryEllen Aldrich  
Stephen Allaire and Mary Ruth Connolly  
Allegiant Global Partners  
Elizabeth Allen  
John Allen  
Marie Allen  
Mary Beth and Scott Allen  
Allied World  
Allread Products LLC  
AmazonSmile Foundation  
Chris Amorosino  
Beth Anderson  
Kate and Woody Anderson  
Shirley Anderson  
Pat Andrews  
Davonna Approvato  
Aquatic Pool & Spa Services  
Louise and Mike Argiro  
Lisa Attle  
Jeanine and Michael Audette  
Avalon CSC  
Avon Village Family Dentistry

## B

Doris Bachand  
Tracy Baden  
Christopher Badenhop  
Judi Baker  
Donna and Steven Banatoski  
Bank of America Private Bank  
Michael Bardt

Amy Barlow  
Judy Barmore  
Tom & Melanie Barnes Fund at Main Street Community Foundation  
Barnes Group Foundation, Inc.  
Harry F. Barnes & Carol H. Barnes Family Foundation  
Jan and Fuller Barnes  
TJ and Emily Barnes  
Tom and Melanie Barnes  
Wallace Barnes Girls Club  
Laura Barone  
Gregory Barr  
Barr, Nicklis, Gorski & Co., PC  
Michelle Bartucca  
Jean and Kurt Barwis  
Baymar Realty Inc. - Century 21  
Pat and Bill Bayne  
Beacon Prescriptions  
Renald and Lisa Beaudet  
Bell City Diner  
Michelle Bellemare  
Mary and Ken Benoit  
Patrice Benoit  
Wilhelmina Bergland  
Bree Berner  
Len and Doris Berton  
Kristen and Jason Berube  
Sue Berube  
Steven and Kathleen Bessette  
Amy Betts  
Derick Betts and Suzanne Barabas Betts  
Drew Betts  
Gair Betts  
Jarre and Whit Betts  
Melissa Betts  
Ronald Bianchi  
Kyle and Emily Biddick  
Vicky Biondi  
Nancy and Mark Blum  
Tim and Lynne Bobroske  
Bob's Discount Furniture Charitable Foundation, Inc.  
Nancy Boccardi  
Sandra Bogdanski  
David Bomar

Jay Bonetta Memorial Fund at Main Street Community Foundation  
Annie Bonetta  
BBK - Bob Alim, Bob Boudreau, Kevin Prior  
Ann and Steven Boudreau  
Gary Boukus  
Gerry Bourbonniere  
Hicham Bourjailli  
Doris Bouvier  
Rick Bouvier  
Marie and Ken Bowes  
Brigitte Boyce  
Cynthia and Keith Boyle  
Boys & Girls Club of Bristol  
Boys & Girls Club of Greater Waterbury, Inc.  
Bradley, Foster & Sargent, Inc.  
Elizabeth Brady  
Steve and Sharon Brainard  
Brand Inspiration  
Susan Bransfield  
Nancy Brault  
Susan and Michael Brault  
Amy Breakstone  
Linda Breault  
Briar Rose Center for Aesthetics & Wellness  
Andrea Briatico  
Bristol BD of ED Employees Local 2267  
Bristol Blues  
Bristol Child Development Center  
Bristol Lions Club  
Bristol Recovery Club Inc.  
Bristol Republican Town Committee  
Bristol Sports Hall of Fame  
Bristol Tramps Sports Reunion  
Bristol Yale Scholarship Fund, Inc.  
Nadine Britton  
Trudy and Peter Brown  
Janice Bruetsch  
Carol Brunalli  
Megan Burns Tantillo  
Dan Burns  
Adam Burr  
Ann Butler  
Susan Byrnes  
Michael Bzdrya

## C

C.V. Mason & Co., Inc.  
Nilda Caban Martinez and Israel Martinez  
Jeffrey and Sheri Caggiano  
Joe Caggiano  
Rob and Rebecca Caiaze  
Caiaze Family Charitable Fund at Main Street Community Foundation  
JoAnn and Bob Calcinari  
Olga Callender  
Ruth and Craig Campbell  
Brooks Campion  
Shari Cantor  
Rich Caporaso  
Chris Capozzi  
Elaine and Richard Carmelich  
Kimberly and Rich Carmelich  
Devin Carney  
Vee Carrington  
Alex Carros  
Alex and Wendy Carros  
Karen and Steve Casey  
Lisa and David Casey  
David and Lisa Casey Charitable Fund at Fidelity Charitable  
Joseph Casorio  
Catherine and Christopher Cassin  
Sue Castelletti  
George Castle  
Sara Castle  
Chelsea Castor  
Alicia Catania  
Lynn Cavo  
Mary Ceneviva-Randles  
Cetera Investors  
Geoffrey Chadwick  
Patti Chapman  
Irene and Leo Charette  
Nancy and John Chiero  
Sam Cho  
Christmas Tree Shops  
Deb and Yong-Sung Chyun  
Armann Ciccarella and Valerie Vitale  
Dorothy and Ray Ciechoski  
Ann Cinotti  
Jeff Cistulli

Dorothy Cistulli  
 City Hardware, Inc.  
 John and Peggy Clancy  
 Donald Clark  
 Cleary & Associates, LLC  
 David Cleaver  
 Sondra and Tony Clement  
 Dale Cliff  
 Frank Cocca  
 Lucille Cocozza  
 Sabrina Colangelo  
 Andrew Collins  
 Jill Colna  
 EJ and Tom Conlin  
 Janet Conlin and Lynn Simpson  
 Conn Acoustics Inc.  
 Connecticut Beer Tours  
 Connecticut Conference of  
 Municipalities (CCM)  
 Connecticut Lighting Center, Inc.  
 Connecticut Wealth Management  
 Mary Connelly Pereira  
 Brendan Contant  
 Joseph Coray  
 Joseph Coray Charitable Fund at  
 Fidelity Charitable  
 Kristin Corrado  
 Dave Corriveau  
 Cost Management Services, LLC  
 Donna and Chris Cote  
 Priscilla Coughlin  
 Country Manor Realty, Inc.  
 Elaine and Rick Couture  
 Kristen Cowell  
 Crescent Manufacturing Operating Co.  
 David Creswell  
 Dennis Crispino  
 Jackie Cross  
 Wendy Cswerko  
 Judith Cumiskey  
 Jim and RoseAnn Cunneen  
 Jeff Curtis  
 Deborah Czark and Bill Cosentino  
 Robert and Dorothy Czark  
 Stacey Czopar and Justin Getts

## D

Betty DaCruz  
 Dan and Sally Daigle  
 Donna Daigle  
 D'Amato Construction Company, Inc.  
 David D'Amato  
 Ed D'Amato  
 Lori and Edward D'Amato  
 Barbara Damon  
 Dancingly Yours, LLC  
 Debra D'Angelo-Wiltse  
 Judy D'Aprile Haydt  
 Lisa D'Aprile and Ken Baldwin  
 Michelle and Peter D'Aprile  
 Paul and Joanne D'Aprile  
 Nancy Dayton  
 David DeCroce  
 Noreen Dee  
 Michele and John Deeb  
 Bill Degan  
 Claudette and Peter Dekoe  
 Phyllis and Peter Del Mastro  
 Delfino Property Management, LLC  
 Paul DellaBianca  
 John and Sherry Dellalana  
 Ruth and Paul DelMonte  
 Betsy Demeyer  
 Barbara and Tim Denehy  
 Carol Denehy  
 Donna Denehy  
 Joseph DePaolo

Valerie DePaolo and Michele Boisvert  
 Tyler Depung  
 John Dering  
 Claire and Jarod Desroches  
 Laura Devlin and Phillip Harkawik  
 Maureen DiComo  
 Amy and Joe DiFazio  
 Richard and Janice Dill  
 George Dion  
 Jason Dionne  
 Mark and Annsue DiVenere  
 DK Movement LLC  
 Denise Dobek  
 Stacey Dolan  
 Sandra Donahue  
 Deb Dorsey  
 Andre and Maria Dorval  
 Cheri Doty  
 Glenna Doulakis  
 Nicole and Justin Downes  
 Tom Downs  
 Dennis and Barbie Doyle  
 Jen Dube  
 Michael Dube and Karen Samul  
 Erin Ducharme  
 Cheryl and Tim Dudzinski  
 Bob Dully  
 Susan and Val Dumais  
 Melanie Dumont  
 Cheryl Dumont-Smith Community Fund at  
 Main Street Community Foundation  
 Karen Dunn  
 Pattie & Bill Dunn Family Charitable Fund at  
 Main Street Community Foundation  
 Cary Dupont  
 Dolores DuPont  
 Joyce Duquette  
 Dina Durlay  
 Cynthia Dzielenski  
 Sue and Rich Dziura

## E

Jeffrey and Kori Eagle  
 Eastern Connecticut Area Labor Federation,  
 AFL-CIO  
 Michael and Margaret Eastham  
 Maureen Eaton  
 Diane and James Eitvydas  
 Catherine Elliott  
 Emily's Catering Group  
 Terry Engel  
 Environmental Learning Centers of  
 Connecticut, Inc.  
 Rachael Erwin  
 ESPN, Inc.  
 Essex Steam Train and Riverboat  
 Linda Estabrook  
 Mary Etter  
 Sarah and Dave Ewertowski

## F

Christine Fabretti  
 Family Roots Produce Market  
 Farmington Bank Community Foundation  
 Camilla Farrell  
 John and Ginny Fasolo  
 Margaret Feeney  
 Kathy and Roger Fekete  
 Shirley Ferraro  
 Marilyn Fetzer  
 Ana Fidantsef  
 Karen Finder  
 Fiondella Fund at Main Street Community  
 Foundation  
 Dean and Sue Fippinger  
 Firefly Hollow Brewing Co.  
 Alison Fisher

Ginny and Geoff Fitzgerald  
 Jon Fitzgerald  
 Tracy and Ryan Fitzpatrick  
 Margi Fletcher  
 Maria Flores  
 Barbara and Bill Fontaine  
 Heidi Fontneau  
 Sue and Ned Foran  
 John and Wendy Formica  
 Greg Fortier  
 Mary and David Fortier  
 Carl Fortuna  
 Edward and Patricia Fournier  
 Karen and Scott Fournier  
 Priscilla Fox  
 Fragile Beauty Studio - Sarah Segovia  
 Lorraine French  
 Patricia and Gary Friedle  
 Lorraine and Marv Friedman  
 Funk Funeral Home  
 Bud and Lilly Funk  
 Furey Family Charitable Fund at Main Street  
 Community Foundation  
 Conor Furey  
 Hanna Furey  
 Lacey Furey and Tom Farley  
 Val and Tim Furey  
 Jackie and Keith Furniss

## G

Mary Lynn and Gary Gagnon  
 Joann Galati  
 Tim Gamache  
 Michael and Dawn Ganem  
 Janice Gannon  
 Dan and Laura Garcia  
 Donna and Peter Gaski  
 Toni Gay  
 John Gervickas Plumbing & Heating  
 Jen Giacomini-Fileccia  
 Gibbs Wire & Steel Co., Inc.  
 Elizabeth Gilbert  
 Joseph and Gloria Gionfriddo  
 Kim Glendon  
 Sue and Charlie Glendon  
 Gnazzo's Food Center  
 Sandra Godin  
 Scott and Sharon Goetjen  
 Golf Club of Avon  
 Olga Gomelskaya  
 David and Cari Goodwin  
 Sam Gorack  
 Peg and Don Goranson  
 Ashlee Goshdigian  
 Ruth Ann and Harley Graime  
 Arlene Grandbois  
 Janice Grant  
 Denise Granucci  
 Marie Granucci  
 Nancy Graziano  
 Greater Bristol Branch of the NAACP  
 Greater Bristol Chamber of Commerce, Inc.  
 Fonda and Ron Green  
 Sally Green  
 Suzanne Greenbacker  
 Barbara and John Greenlaw  
 Dave Greenleaf  
 Fran and Bill Greger  
 Mary Kay Greger  
 Mark Grennan and Nina Ibitz  
 Laura Gridley  
 Bill and Barbara Grindal  
 Christine Griswold  
 Lauren Gross

## H

Michele Haas  
 Barbara Hackman Franklin  
 Chuck Haddad  
 Emma Haddix  
 Brian and Michele Haggerty  
 Michael and Julie Hamel  
 Diane Hamel  
 Hamzy Law Firm, LLC  
 Bill and Anita Hamzy  
 Mark and Shadia Hamzy  
 Rajaa Hamzy  
 Patricia Hannon  
 John Harkins  
 Richard and Carol Harlow  
 Harper & Whitfield, P.C.  
 Greg and Karen Harper  
 Wilma and Dennis Hart  
 Hartford Gay & Lesbian Health Collective  
 Hartford Yard Goats  
 Harvest Bakery, Inc.  
 Judy and Steve Hayman  
 Heavenly Smoke, LLC  
 Gretchen Hein  
 Glenn and Sue Heiser  
 Helen Henne  
 Keith Hershberger and Kevin Green  
 Steven Heubeck  
 Sandra Hierl  
 Michael Higgins  
 Windord Alexander and Eileen Hinson  
 Hinson Family Fund at National  
 Philanthropic Trust  
 Ken Hintz  
 Mell Hobson  
 Jeffrey and Jessica Hogan  
 Maryellen Holden  
 Barbara Holtz  
 Kathy Hopko  
 Liz Hosman  
 Drew Hottell  
 John Howard  
 Xhoi Hoxha  
 HQ Dumpsters & Recycling LLC  
 Dave Huber  
 Malcolm Huckaby  
 Dorinda Hultgren  
 Kaitlin and Ryan Humble  
 Gary and Kathy Hunt  
 Lois Hunt  
 Jackie and Marty Hurwitz  
 Hydrate to Heal

## I

Dave and Cathy Ieronimo  
 Imagine Nation, A Museum Early  
 Learning Center  
 Industrial Builders & Realty LLC  
 Ivy's Brewed Awakenings, LLC  
 Lisa Iwanicki

## J

J. Timothy's Taverne  
 Kim and AJ James  
 Wendy Jersey  
 Mark Johnson  
 Rochelle and David Jones  
 Frank and Cathy Joslyn  
 Irene Joyell  
 Vanessa Judd

## K

Phoebe Kaczypenski  
 Bob and Patti Kalat  
 Jessica Kaleta  
 Gayle Kall  
 Sanita Karpeichik

Kerry and Kim Kasparian  
Donna Katsaounis  
Debra and Andrew Kaye  
Kev Keating  
Keating's Wood Service  
Mary and Dennis Keenan  
Brenda Kelley  
Laura Kelly  
Kendra Scott  
Brandy Kennerson  
Jerry Kenney  
Kate and Kevin Kerchaert  
Hal Kilby  
Jennifer King  
Lisa and David King  
Paula King  
Joan and Warren Kirschner  
Les Kish  
Themis Klarides and Greg Butler  
Matt Knickerbocker  
Paula and Rick Knight  
Donna and Brian Koser  
Betsy Kotowski  
Elizabeth Kowalewski  
Kozak & Salina, LLC  
Peter and Jan Kozlowski  
Darlene Krammer  
Atty. Edward C. Krawiecki Jr.  
Sharon and Ed Krawiecki  
Rick Kriscenski  
LeAnn Kroll  
Anita Krukas  
Meghan Kulak

## L

L & M Paving  
Pamela Labadia  
Anthony Labato  
Richard Lacey  
John LaChance  
LaFrance Medical Aesthetics  
Michael Lambert  
Carolee Landino  
Katie and Frank Landrette  
Angela Langeway  
Christopher and Leah LaPlaca  
LaPlaca Family Foundation at  
Schwab Charitable  
Tom LaPorte  
Kim Larkin  
Donna and Steve Lasewicz  
Ryan Latreille  
Laurel Street Apartments, LLC  
Louise Lauretano DeMars  
Judi Ann and Jim Lausier  
Georgette Lauzier  
Kristen LaVallee  
Pat and Morrie Laviero  
Beverly Laviero  
Carol Lawley  
Donna Lazorik and Gail Zacharias  
John Lazorik  
Leading Ladies  
Richard Leahy and Lynne Barnes Leahy  
Richard Leahy & Lynn Barnes Leahy Family  
Fund at Bank of America Charitable  
Gift Fund  
Michael LeBlanc and Erin Crisanti  
Dawn Leger  
John & Sandra Leone Family Charitable Fund  
at Main Street Community Foundation  
Rosemary Lepore and Gregory Szyzkowski  
Kelly and Brian Leppard  
Holly Lerose  
Lessard Lanes  
Barbara and John Letizia  
Geraldine and Charles Letizia  
Michelle LeVasseur

Diane Libby  
Annemarie Licini-Paris and Scott Paris  
Andrew and Casandra Lim  
Beth and Robert Lincoln  
Jaimie Lindenmuth  
Eileen and Larry Linnetz  
Mel Lipas and Bob Frazee  
Lockton Companies  
Alfred Lodovico  
Ashley Lodovico  
Bonnie and John Lodovico  
Joe Lodovico  
Judie and Tony Lodovico  
Michael Lodovico and Wendy Goodwin  
Bill and Terry Lombardi  
Sally Lord  
Ed and Laura Lorenson  
Robert Low  
Sarah Lucian  
Stacy Lucid  
Mary Lusso  
Ev Lyons

## M

M&T Bank  
M.R. Home Care  
Victoria MacDonald  
Kimberley MacDougall  
Susan MacInnis  
Barbara Mackay  
Diane and Ray Macklosky  
Dawn Madden  
Robert Magnus  
Thomas Maher  
David Maikowski  
Main Street Pint & Plate  
Kathryn and Mark Malley  
Dale Malvezzi  
Manafort Brothers Incorporated  
Manafort Family Foundation  
Lexie and Diane Mangum  
Anthony Maniscalco  
Maple End Package Store  
Enis Mara  
Angelo Maragos  
Jerry Marcoux  
Roberta Marinelli Kost  
Andy Markowski  
Amy Marley  
Gary Martin  
Henri Martin  
Linda Mascaro  
Joe and Shirra Masi  
Michele Maskell  
Michael Maskery  
Scott and Jennifer Maskery  
Masotti Electric, LLC  
Massage Envy  
Mickey and Honey Mastrianni  
John and Sharon Mattas  
Julie and Patrick Matthews  
Nancy and Tony Mattioli  
Nick and Cheryl Maturo  
Ellis Mayo  
Ann and Sandy Mazeau  
Beth and Bill Mazzaccaro  
Tom Mazzarella  
Thomas and Eileen McAdoo  
JoAnn McBrien  
Tulis McCall  
Claudia McCann  
Roxanne McCann  
Ally McCarthy  
Molly McCarthy  
Jackie McCauley  
McCormack Builders  
Angie McCormack  
Ryan McCoy

Michael and Vicki McGloin  
Liz McGuire  
Don McIntyre  
Bob and Kathy McLaughlin  
Charlie McLaughlin  
Sigrid McNeill-Brown  
Eileen McNulty  
Ted and Carole McPhee  
Joanne McPortland  
Nancy and Jim Mead  
Mary-Elizabeth Meli  
Karen and Paul Melnick  
Ingrid Melvin  
MEMIC  
Linda Mendelsohn  
Jackie and Dave Merchant  
Dina Merrow, Owner of the Garden at  
Pinehurst Farm  
Carol and Bob Messier  
Metro Bis Restaurant  
Julie Metzroth  
Micari Financial Group, LLC  
James Michel  
Roger Michele  
Julie Mike  
Bill and Bev Miller  
Edward Miller  
Linda and Kip Miller  
Dave Mills  
Cathy and Jerry Milne  
Ross Milne  
Townie Mink  
Laura and Craig Minor  
Jan Minor  
Talia Mitchell  
Art Mocabee  
Matt and Dawn Mockler  
Modern Mechanical Systems, Inc  
Michael Molgano  
Marybeth and Robert Mongillo  
Bruce and Janet Montella  
Dan Moore  
Susan Moore  
Sue and Mark Moreau  
Morgan Stanley Global Impact Funding Trust  
Mark and Kim Moriarty  
Tom Morrow  
Eileen and Daniel Moskey  
Teresa Mosquera  
Ann Munger-Chrysal  
Munson's Chocolates  
Sue and Tim Murawski  
Cynthia Murawski  
Kim Murphy  
Mystic Seaport Museum

## N

Frances Nadeau  
Carolyn Naples  
Robert Nave  
Elizabeth Neave and Bob Meagher  
Johanna Needham  
Elliot and Pat Nelson  
Jan Neri  
The Neubauer Building LLC  
New England Spring & Metalstamping  
Association  
Patrick Ney  
Michael and Colleen Nicastro  
Karolina Nichols  
Dawn and Eric Nielsen  
Andy and Janet Nigro  
David and Sharon Nocera  
Dolores and Patsy Nocera  
Joline and James Nocera  
Miranda Nocera and Zachary Ouellette  
Selim and Linda Noujaim

Susan and Rick O'Brien  
Jenny and Tim O'Connor  
Sally and Terry O'Connor  
Chris and Sue O'Halloran  
Catherine and James O'Hara  
Shelby O'Hara  
Courtney O'Keefe  
Mitch Oliva  
Gordon Oliver  
Optum Services Inc.  
Carol and James Orie  
Rouaida Osadczyk  
Christine Ososki  
Donna Osuch  
Ashley Ouellette  
Cheryl and Michael Owsianko  
Estate of Chester H. Ozga

## P

Palace Theater  
Robert Palazzo  
Lisa Palen  
The Pallet People  
Ellen Palmer  
Katherine Palmieri  
Mark Palmieri  
Kristen Pandolfi  
Sebastian and Karolina Panioto  
Donna Papazian  
Linda Paradis  
The Parkside Cafe  
Deborah Paruske  
Cathy Paskus  
Cara Passaro  
Cara Pavalock-D'Amato and Anthony D'Amato  
Pearson School  
Trish Peck  
Sandy and James Pelletier  
William Pello  
Adam Pelz  
Dawn Perkins  
Dom and Cindy Perno  
Steven Perruccio  
Karen Pescarmona  
Aeja and Jeremy Peterson  
Kathleen Peterson  
Mark Peterson  
Nancy and Ed Peterson  
Tara Peterson  
Bill Petit  
Lynn Petrucelli  
Mary-Alice Petrucelli-Timek  
Patti and Joe Philippon  
Preciosa Piasecki  
Susan Piatek-Revoir  
Penelope Pichette  
Kenneth Pieper  
Rhonda and John Pilkington  
Leslie Pinto  
Patricia and John Piscopo  
Ernie Pitti  
Plainville Funeral Home  
Plainville PumpkinFest  
Plainville Rotary Foundation Inc.  
Terri and Rene Poirier  
Gregory Polletta  
Debbie Porrini  
Julie and Caleb Portfolio  
Rick and Colleen Porth  
John Prior  
Debbie and Marino Prozzo  
Prudence Crandall Center  
Ann and Jim Pryor  
Przybysz + Associates Government Affairs  
Joanne Pudlik  
Alben Puhlick  
Pure Foods LLC

**Q** //  
Rosemary Quigley  
Robert and Molly Quinn  
Molly & Rob Quinn Family Fund at  
Fidelity Charitable  
Yvonne and Jordan Quinonez  
Joanne and Ed Quish  
Quota International of Bristol

**R** //  
Doreen and Dave Rackliffe  
Jeanne Radcliff  
Radiologic Associates, PC  
George Rafael  
Jerry and Carroll Rafaniello  
Darcy and David Rajotte  
Samantha Rajotte  
Justine Rakich-Kelly  
Louis and Lynn Rascoe  
Ihsan Rassoul  
Carrie and Kevin Redding  
Robert Reidy and Kathleen Andre  
Reidy/Andre Fund at The Boston Foundation  
Mark and Robyn Reilly  
Kathy and Ed Reinhard  
Joan Reinholdtson  
Wendy and Gary Reola  
Research Development at Bradley Road LLC  
Michael and Cassandra Reynolds  
Jeffrey and Ann Marie Rheault  
Linda Rich  
Jamie Rinaldi  
Ezra Ripple  
Thomas Ritter  
Mike and Diane Rivers  
Riverside Investment Services LLC  
Carole and Thomas Roberge  
Gary Roberge  
Jeanne and Gary Roberge  
Randy and Laurie Roberge  
Gyla Roberson  
Robert Rosenheim Foundation Inc.  
Koriann Roberts  
Jodi and Paul Rochford  
Barbara Rockwell  
Susan Roesch  
Robin and Joseph Roman  
Marissa Rosenfield  
Rotary Club of Terryville  
Mark Rouleau  
Rowley Spring and Stamping Corp.  
Nancy Roy  
Alan Rudolewicz  
The Arthur G. Russel Co. Inc.  
Maggie Russell  
Patricia Russell  
Linda Russo  
Karen and Chip Ryan

**S** //  
Susan and Ronald Sadecki  
Kristi Sadowski  
Michael Saman  
Lori Sandefur  
Rob and Janice Sanderford  
Mary Santorso  
Rachel and Jay Sattler  
Tom Sayen  
Jim and Kathy Sayre  
Button and Jim Scarritt  
John and Susan Scarritt  
John-David Scarritt  
Brad and Terri Schaffrick  
Gary Schaffrick  
Betsy Scheer  
Michael and Christine Scheidel  
Peg and Bob Scherbarth

Denise and Tom Schittina  
Chelsea Schmidt  
Tamara and Alan Schmidt  
Diane Scholnick  
Mike and Janet Schroeder  
Jed Schulman  
Schwab Charitable  
Jonathan and Janet Schwartz  
Virginia T. Schwarz and Katherine Garstka  
Scott Funeral Home, Inc.  
Chris Scott  
Pamela Scrivo  
Susan and Skip Scully  
Danny and Kasey Segreve  
Al and Debbie Seibert  
David and Jean Sekorski  
Maryann Seleman  
Sharon and Carl Sellberg  
Amy Shackett Curtis and Jay Curtis  
Grayson Shackett  
Tom Shackett  
Danny and Judy Sherman  
Marybeth Shutran  
Melvin Siebold  
Phieng Siliphaivanh  
Barbara and John Silliman  
Mark Simonik  
Lee Sinkwich and Claudette Ferrante  
Jennifer Sirois  
Sophia Sirois  
Sky Bight Foundation, Inc.  
Kevin Small and Irene Bolan-Small  
Jessie and Dan Smiley  
Dianne and Ron Smith  
John and Mary Smith  
Mary Smith  
Pat and Murdo Smith  
James Sok and Debra Hamzy Sok  
Mark and Lorraine Sola-Janewicz  
Deborah Solomon  
Sally Sonne  
Maureen Sonstrom  
Southern Union State Community College  
Southington Country Club  
Southington Tool & Manufacturing Corp.  
Clark Spencer  
Terry Spencer  
Wendy Spillane  
Deborah Spooner  
Elaine Sportelli  
Korrie Sprong  
St. Andrew Evangelical Lutheran Church  
St. Maximilian Kolbe Parish  
St. Maximilian Kolbe Parish Men's Club  
St. Paul Catholic High School  
Nancy and Gary St. Pierre  
Marybeth Stanton  
Anne and Michael Stanton  
Tom Steen  
Nicole Stere  
Karen Stevens  
Sue Stevens  
Tahlya Stevenson  
Doreen and Stanley Stickney  
The Stocker Foundation  
Angela and Bill Stortz  
Allison Stotz and Scott Juzwick  
Sharon and Rodger Stotz  
Stotz Family Fund at Schwab Charitable  
Mary Stratton  
Stylux Beauty  
LaDonna Sullivan  
Larry Sutherland  
Michael and Nicole Sweeney  
Bill and Margaret Sweet  
Gina and Russ Swenton  
John Swicklas

Gregory and Persephone Szydlo  
Alice Szyzkowski

**T** //  
Thomas Tabellione  
Joe Tavera  
Barbara Tenerowicz  
Terry Enterprises, LLC  
Terryville High School  
Terryville Woman's Club  
James Tetro  
Fernando and Cecil Theriault  
Jane Theriault  
Cheryl Thibeault  
Thomaston Savings Bank  
Barry Thompson and Therese Pac  
Pat Thompson  
Thrivent Action Team  
Tilcon Connecticut Inc.  
Lauren Tiscia  
George Tishon  
Christine Tofeldt  
Tollman Spring Co., Inc.  
P.T. Tomkil Johnson  
Marsha Tomlinson  
Linda Tonon  
Betsy Tooker  
John and Angela Torres  
Torrington Savings Bank  
Total Wine & More  
Town Fair Tire Foundation Inc.  
Kim and Bill Tracy  
Blaise and Maria Tramazzo  
Transcend Beer Crafters  
Vicky Triano  
Alvin and Donna Tuck  
Gene Turco  
Robert and Beverly Turner  
Russ and Marianne Tuverson  
Margaret Tylutki

**U** //  
UBI Federal Credit Union  
Bernadine and Algerd Ulinskas  
The Ultimate Companies, Inc.  
Pat Ursaki  
US Electrical Service Inc.

**V** //  
Bruce and Maryann Vagts  
Mark and Florence Valentine  
Carm and Pete Valerio  
Erin Vaughn  
Donna Veach  
Pat and Bill Veits  
Angelina Ventrella  
Lindsay Vigue Photography  
Steve and Kim Villanti

**W** //  
Rachel Wache  
Bruce Wallen and Jagadeshkumar  
Balasubramanian  
Brian and Maria Walsh  
Mary and Tim Walsh  
Bonny and Larry Wanzer  
The Warner Theatre  
Darlene Warner  
Lori Wartonick  
Andrea Wasley  
Laura Watson  
Katherine and Gary Weed  
Jason and Elizabeth Welch  
Jill and Arnie Wensky  
Sharon and John Werner  
Gerald West  
Elaine Weston

Julia Weston and Sean Williams  
Joan and Michael Wexelbaum  
Wheeler Clinic  
John Whitcomb  
Josh Whitcomb  
Marian Whitcomb  
Mike Whitcomb  
Marcia White  
Nancy Whittle  
Al Wilhelm  
Carol Wilkinson  
Jacki and Thomas Willametz  
Diana Willard  
Logan Williams  
Chris and Jill Wilson  
Jennifer Wilson  
Erin Wininger  
Winterberry Gardens  
Bridget Wiseman  
Troy Wiseman  
Elaine Wojenski  
Christine Tofeldt  
Susan Wojtas  
Dan and Beth Wollenberg  
Pat and Bob Wollenberg  
Ronald Wollenberg  
Jen Wollman  
Terrie Wood  
Nancy Woodling  
Phyllis Worhunsky  
Christopher Wright

**Y** //  
David Yaccarino  
Yarde Metals, Inc.  
Barbara Yarde  
Debbie and Bruce Yarde  
Donald and Nancy Younghans

**Z** //  
Christa Zaldivar  
Alanna Zammatt  
Lorna and Mark Zammatt  
Mike and Alexa Zammatt  
Becky and Marc Zappone  
Frank Zbikowski  
Carole Zembko  
Marcus and Kristni Zendian  
Angie Zima  
Caren and Mike Ziogas  
Carolyn Ziogas  
Rosanne Ziogas  
Victoria Ziotas  
Stephanie and David Zomick

**"We can't help everyone, but everyone can help someone."**

Dr. Loretta Scott



**GIFTS WERE MADE IN HONOR OF:**

Aiden's 8th grade graduation  
 Brian Archibald  
 Thomas O. Barnes, Sr.  
 BBK and all they do for the community  
 Whit Betts' Retirement  
 Bread for Life  
 Bristol Board of Education - Preschool/  
 Bristol Child Development Center/  
 Imagine Nation, A Museum Early  
 Learning Center  
 David Casey  
 Ronnie Cassin  
 Judy Caturano  
 Eric Clemons  
 Nancy Culver  
 Joanne and Paul D'Aprile  
 Mary and Fritz Downs  
 Kevin Estela  
 Olga Gomelskaya  
 Emile Hobbes French  
 Ryan and Kaitlin Humble  
 Wesley Jack Kaye  
 The Keller Family  
 Hal Kilby's Birthday  
 Jen King  
 Denise Larson  
 Jim Larson  
 Elisa Latreille  
 All LGBTQIA+  
 Life  
 Judie Lodovico  
 Karen Lombardi  
 Manning/Sisson Memorial Fund at MSCF  
 Paul Maskery  
 Mazi  
 Jolene Miceli  
 MLK-Whitehead Scholarship Breakfast  
 Miranda Nocera and Zachary Ouellette's  
 Wedding and Wedding Guests  
 Mitchell Oliva  
 Donna Osuch  
 Pass the Purse  
 The Perkins family and Southington  
 Police Department  
 William A. Petit Sr.  
 William and Barbara Petit Sr.  
 John R. Petrucelli

Mary-Alice Petrucelli-Timek  
 Cathy Plourde  
 Pride Month  
 Rocco Prior-Li  
 Alex and Violet Pyrzenski  
 Linda Rich  
 Garrett Robinson  
 Susan Sadecki  
 Rob and Jan Sanderford  
 John D. Scarritt  
 John-David Scarritt  
 All MSCF does for the South Side School  
 Community  
 The Southington Police Department  
 Valentine's Day  
 Joyce Voisine  
 West Bristol School  
 In celebration of another outstanding  
 year for WGF!  
 Marian Whitcomb  
 Julia Willametz

**GIFTS MADE IN MEMORY OF:**

Andrew and Teddy  
 Elizabeth Barnes  
 Susan "Susie Q" K. Barnes Lawley  
 Sid Bernard  
 Kai Alejandro Yagual Betts  
 Stanley Bitel  
 Myra Boccardi Desroches  
 Jay Bonetta  
 Elizabeth "Betty" Boukus  
 Bertrand Bouvier  
 Remy Brzezinski  
 Alicia Butler  
 Elsie M. Caban  
 Sandy Caggiano  
 Paul Carrington  
 Annibale Castrogiovanni  
 Armand Choinier  
 Evan J. Chyun  
 Dante Cistulli  
 Dante Cistulli II  
 Lior Cohen  
 Michael D'Aprile  
 Theresa Darby  
 Anne Donovan

Jeffrey Downes  
 Roland J. Dumont  
 Rose Esposito  
 Darlene L. Estela  
 Father Hugh Fagan  
 Helen Fanelli  
 Tammy Gennett  
 Maureen Ghio  
 Andrew Giacomini  
 Murielle Giacomini  
 Jake Gilbert  
 Roger C. Grandbois  
 Deputy Luke R. Gross  
 Alex Hamzy  
 Carol Hoffman  
 Loretta Hopko  
 Robert Hopko  
 Diane B. Huber  
 Mason Julian  
 Leonard Kilian  
 Doris Koon  
 Marc Lawley  
 Doris Lazorik  
 John Lazorik  
 Louie and Tegy  
 Scott MacDonald  
 Winnie Maher  
 Patricia Malvezzi  
 Marie Maniscalco  
 Anna May Manning  
 Dennis Manning  
 Carol Marozzi  
 Patricia Marseglia  
 Nick Marut  
 Margaret McGrinder  
 Bob Merriman  
 Joan Morrissey  
 Matthew Musante  
 Lucretia Netti  
 AJ Nocera  
 David Nocera, Jr.  
 Tony Norton  
 Billy O'Keefe  
 Lee O'Keefe  
 Lenora Oliver  
 Christopher Palen  
 Marilee Palmieri  
 Bill Penikas

Jacob Perkins  
 John R. Petrucelli  
 Patricia Lee Petrucelli  
 Stacey Porrini Clingan  
 Gus Rancourt  
 Kelly Rodman  
 Douglas Roland  
 Clement J. Roy  
 Ken Scheer  
 Jill Lynne Shackett  
 Mary Sisson  
 Stacy Renee Stewart  
 Jerry Sullivan  
 Barbara Talmadge Sieber  
 Vladimir Trofimov  
 Elizabeth Tyrrell  
 Jay Tyrrell  
 Ronald James Unkrich  
 The Victims of the Colorado Club Q Tragedy  
 Art Ward  
 Kristen Warner  
 William Wartonick  
 Paige Wartonick Laferriere  
 Everett Weed  
 John Whitcomb  
 Reverend Eddie Whitehead  
 Craig Yarde  
 Shirley W. Zbikowski

**GIFTS IN KIND:**

Garrett Printing & Graphics Inc.  
 Marketing Solutions Unlimited  
 Dawn Nielsen  
 Jeanne Radcliff  
 Ron Sadecki

**MATCHING GIFTS:**

Barnes Group Foundation, Inc.  
 Benevity, Inc.  
 The Blackbaud Giving Fund  
 Charities Aid Foundation of America  
 The Merck Foundation  
 The Stocker Foundation  
 Torrington Savings Bank



# 2022 Committee Members, Officers, Directors and Staff

Main Street Community Foundation welcomes volunteers from our local communities to serve as committee members. If you are interested in this opportunity, please contact us.



## Main Street Community Foundation Staff

Susan D. Sadecki, President & CEO  
Kate M. Kerchaert, Director of Grants & Programs  
Alicia Krar, Grants Manager  
Keelin Mathews, Communications Associate  
Julie Matthews, Administrative Services Manager  
Rhonda Pilkington, Director of Finance  
Samantha R. Rajotte, Scholarship & Program Officer

## 2022 Officers and Directors

Scott F. Fournier, Chair of the Board	Mary Ellen Hobson
Daniel J. Daigle, Vice-Chair	Kimberly H. James
Kathryn C. Reinhard, Secretary	Mark D. Malley
William R. Micari, Treasurer	Mark Moriarty
Marguerite P. Fletcher, Past Board Chair	Jennifer O'Connor
Susan D. Sadecki, President & CEO	John-David Scarritt
Megan E. Albanese	Michael Sweeney
Jarre B. Betts	Andrea Wasley
Kyle S. Biddick	Rebecca B. Zappone

## FOUNDERS

Sherwood Anderson  
Carlyle F. Barnes  
Thomas O. Barnes  
Delores Capers  
Ann Clark  
Terry B. Fletcher  
Edward P. Lorenson  
Robert S. Merriman  
David J. Preleski  
Jeanne E. Radcliff  
John E. Smith  
Christopher Ziogas

## ASSET DEVELOPMENT COMMITTEE

Kimberly H. James, Chair  
Megan E. Albanese  
Todd Burton  
Marguerite P. Fletcher  
Kathryn C. Reinhard  
Mary Shopis  
Scott F. Fournier, ex officio  
Susan D. Sadecki, ex officio

## AUDIT COMMITTEE

Kyle S. Biddick, Chair  
Lisa Attle  
Thomas O. Barnes  
Mark Blum  
Michael J. Brault  
Doug Devnew  
Greg Provencal  
Jennifer J. Scully  
Michael F. Sweeney  
Scott F. Fournier, ex officio  
Susan D. Sadecki, ex officio

## BOARD DEVELOPMENT COMMITTEE

Marguerite P. Fletcher, Chair  
Thomas O. Barnes  
Jarre B. Betts  
Kyle S. Biddick  
Kimberly H. James  
Mark D. Malley  
Jennifer O'Connor  
John D. Scarritt  
John E. Smith  
Scott F. Fournier, ex officio  
Susan D. Sadecki, ex officio

## BY LAWS COMMITTEE

Mark D. Malley, Chair  
Marguerite P. Fletcher  
Mary Ellen Hobson  
Scott F. Fournier, ex officio  
Susan D. Sadecki, ex officio

## DISTRIBUTION COMMITTEE

Jennifer O'Connor, Chair  
Megan E. Albanese, Vice Chair  
Halley Allaire  
Lisa Attle  
Jeanine Audette  
Richard Corcoran  
Brent Davenport  
Mark DiVenere  
Rebecca Doyle  
Marguerite P. Fletcher  
Lorraine Friedman  
Anita Hamzy  
Kimberly H. James  
Paula Knight  
Margo Lachowicz  
Jackie Laramée  
Mark D. Malley

JoAnn McBrien  
Nancy O'Donnell  
Jeanne Radcliff  
John-David Scarritt  
Scott F. Fournier, ex officio  
Susan D. Sadecki, ex officio

## FINANCE COMMITTEE

William R. Micari, Chair  
David J. Aldieri  
Daniel J. Daigle  
Mark D. Malley  
Janis Neri  
Jeanne Radcliff  
John D. Scarritt  
Andrea Wasley  
Scott F. Fournier, ex officio  
Susan D. Sadecki, ex officio

## INVESTMENT COMMITTEE

Daniel J. Daigle, Chair  
Rebecca B. Zappone, Vice Chair  
Jarre B. Betts  
Mark Blum  
Robert Caiaze  
Ginny Fitzgerald  
John D. Scarritt  
Scott F. Fournier, ex officio  
Susan D. Sadecki, ex officio

## PERSONNEL COMMITTEE

Mary Ellen Hobson, Chair  
Elaine Couture  
Marguerite P. Fletcher  
Scott F. Fournier, ex officio  
Susan D. Sadecki, ex officio

## SCHOLARSHIP COMMITTEE

Kathryn C. Reinhard, Chair  
Mark Moriarty, Vice Chair  
Dawn Angelillo  
Kara Aparo  
Cynthia Arthur  
Michael Audette  
Kimberly Bernier  
Juan Berrios  
Marie Bowes  
Nina Caruso  
Jeff Curtis  
Valerie DePaolo  
Cathy Donnelly  
Cheryl Dumont-Smith  
Marguerite P. Fletcher  
Valerie Furey  
Lenore Gallagher  
Jennifer Giacomini-Fileccia  
Mary Kay Greger  
David Griszkauskas  
Raven Henderson  
Mary Ellen Hobson  
Sarah Larson  
Judi Ann Lausier  
Elizabeth Lefrancois  
Dawn Leger  
Terry Lombardi  
Karen Nestico  
Dave Nocera  
Marilyn Perzan  
Patricia Philippon  
Haley Pilkington  
Sue-Ellen Repeta  
Mary Shopis  
Jane Theriault  
Christina Welch  
Rebecca B. Zappone  
Scott F. Fournier, ex officio  
Susan D. Sadecki, ex officio

# Financial Statements

## CONSOLIDATED STATEMENT OF FINANCIAL POSITION

	December 31, 2022	December 31, 2021
<b>ASSETS</b>		
Cash and Equivalents	\$764,766	\$625,358
Investments	50,516,581	60,382,736
Pledges Receivable, net	-	250
Prepaid Expenses	-	248
Furniture and Equipment, net of depreciation	17,509	19,228
<b>Total Assets</b>	<b>\$51,298,856</b>	<b>\$61,027,820</b>
<b>LIABILITIES AND NET ASSETS</b>		
Grants Payable	74,265	174,300
Accrued Expenses	12,116	10,018
Agency Endowments & Other Component Funds	7,174,603	8,547,976
Total Liabilities	\$7,260,984	\$8,732,294
Net Assets	\$44,037,872	\$52,295,526
<b>Total Liabilities and Net Assets</b>	<b>\$51,298,856</b>	<b>\$61,027,820</b>

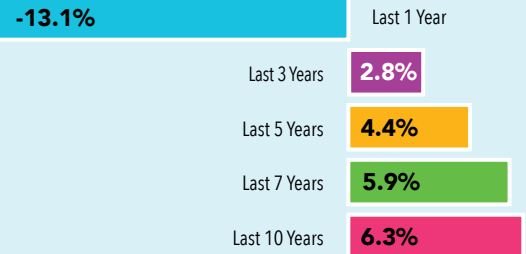
## CONSOLIDATED STATEMENT OF ACTIVITIES

	December 31, 2022	December 31, 2021
<b>SUPPORT AND REVENUES</b>		
Fund Contributions	\$1,360,439	\$1,972,800
Less: Contributions to Agency/Component Funds	(16,100)	(12,185)
Interest and Dividend Income*	1,254,347	1,227,774
Other Income*	91,162	73,365
Investment Gains/(Losses)*	(8,007,301)	5,034,151
<b>Total Support and Revenues</b>	<b>\$(5,317,453)</b>	<b>\$8,295,905</b>
<b>GRANTS AND EXPENSES</b>		
Grants*	\$1,781,350	\$1,660,740
Scholarships	281,600	256,615
Operating Expenses	877,251	792,570
<b>Total Grants and Expenses</b>	<b>\$2,940,201</b>	<b>\$2,709,925</b>
Change in Net Assets	\$(8,257,654)	\$5,585,980
Net Assets at Beginning of Year	\$52,295,526	\$46,709,546
<b>Total Net Assets at End of Year</b>	<b>\$44,037,872</b>	<b>\$52,295,526</b>

\*Net of Agency & Component Fund Activity

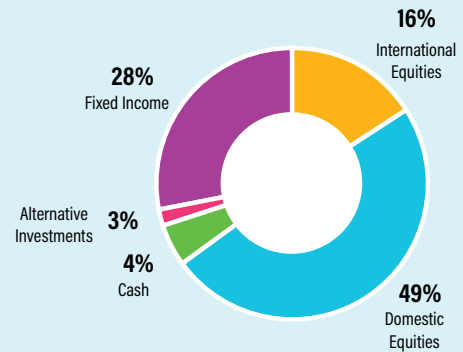
## HISTORICAL INVESTMENT PERFORMANCE

Returns as of December 31, 2022, reported net of investment management fees:

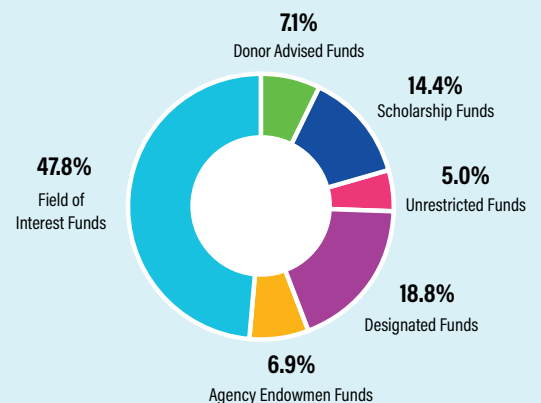


## HOW YOUR COMMUNITY'S ENDOWMENT IS INVESTED

Asset Allocation as of December 31, 2022:



## 2022 PERCENTAGE OF TOTAL ASSETS BY FUND TYPE



**Main Street**



COMMUNITY  
FOUNDATION

120 Halcyon Drive  
P.O. Box 2702  
Bristol, CT 06011-2702

NONPROFIT  
ORGANIZATION  
U.S. POSTAGE  
PAID  
HARTFORD, CT  
PERMIT #1121

annual report 2022

Bristol  
Burlington  
Plainville  
Plymouth  
Southington  
Wolcott

**Your Community.**  
**Your Legacy.**  
**Your Way.**

**Main Street Community Foundation**

120 Halcyon Drive  
P.O. Box 2702  
Bristol, CT 06011-2702

P. 860.583.6363  
F. 860.589.1252  
[www.mainstreetfoundation.org](http://www.mainstreetfoundation.org)



**CFNS**  
ACCREDITED  
FOUNDATION

Confirmed in compliance with  
Community Foundations National Standards.